



the
WATER
MAIN

APM “Impact” Initiatives

Grew out of strategic plan consultation process with 180+ stakeholders

3 new ‘focal areas’ for APM:



Sustainability: Water



Health: Mental Health



Education: Birth – 3yrs

Why Water?

Only **2.5% of the world's water is freshwater**; of that, **just 1.5%** is available to us today (UN)

Researchers expect **5 billion people** to live in water-stressed areas by 2050 (MIT)

2.1 billion people lack access to safely managed drinking water services (WHO/UNICEF)

Water in Minnesota

80% of Minnesotans believe there are **water issues elsewhere**, but not here.

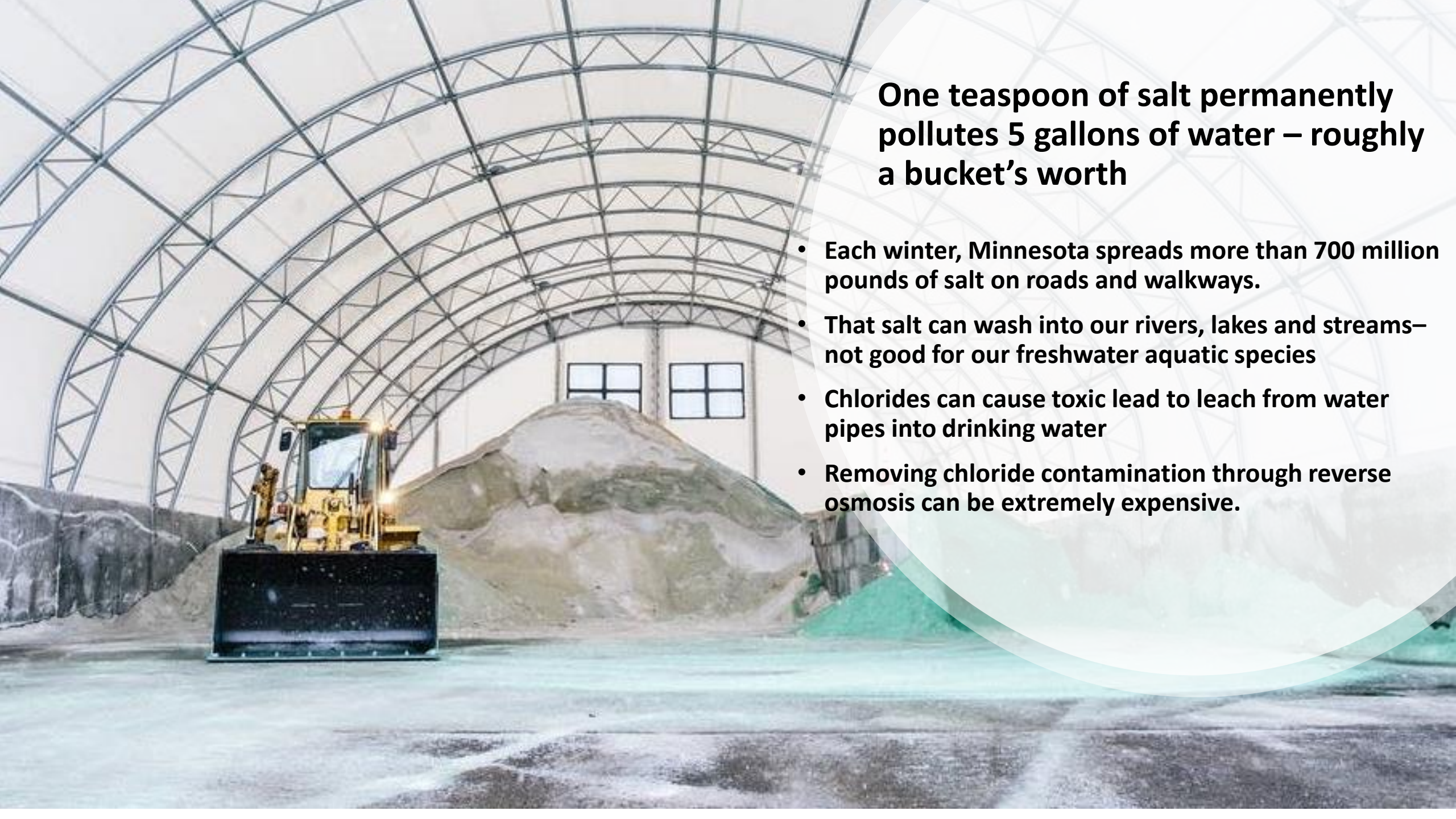
50% of MPR listeners said they felt informed about water on a local level.

But most **could not answer half the questions** we asked about water in the state.

Only 40% of Minnesotans know that road salt harms water quality.

(Nielsen MPR News survey, 2016)






One teaspoon of salt permanently pollutes 5 gallons of water – roughly a bucket's worth

- **Each winter, Minnesota spreads more than 700 million pounds of salt on roads and walkways.**
- **That salt can wash into our rivers, lakes and streams— not good for our freshwater aquatic species**
- **Chlorides can cause toxic lead to leach from water pipes into drinking water**
- **Removing chloride contamination through reverse osmosis can be extremely expensive.**

Road salt is polluting our water. Here's how we can fix it

Amy Skoczlas Cole,  Cody Nelson · St. Paul · Environment
Dec 6, 2017



Minnesota dumps some 730 million pounds of salt on roadways each winter, and it's posing a major risk to the environment. *Paul Middlestaedt for MPR News file*

Shingle Creek's cautionary tale for Minnesota's water

 Kirsti Marohn · Plymouth, Minn. · Jan 10, 2018 Environment



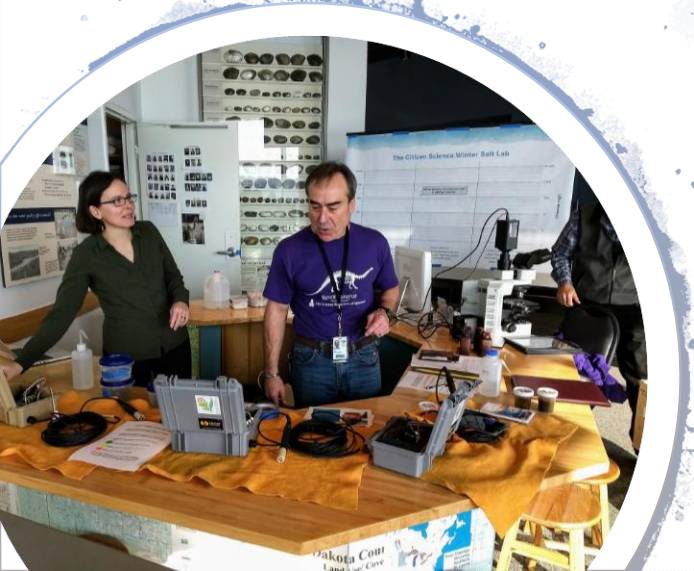
A front-end loader sits in front of piles of rock salt, left, and salt mixed with magnesium chloride, right, to be spread on roads at the city of Plymouth maintenance facility last month. *Evan Frost | MPR News*

The Water Main collaborated with MPR News's Morning Edition team for on-air and online reporting on this topic





the current®



Citizen Science Winter Salt Lab

“The amount of salt that is melted into the water table was much more than I expected! As a Minnesotan, where we really need the salt to melt the icy roads, sidewalks, stairs, etc, it becomes a dilemma. Great eye opening exhibit!”

– Lillian Hang



**Science
Museum**
of Minnesota®

the
WATER
MAIN

TheWaterMain.org | @thewatermain

 **AMERICAN PUBLIC MEDIA®**