

A microscopic view of snowflakes, showing intricate, six-sided crystalline structures. The snowflakes are white and appear to be falling or resting on a dark surface, creating a high-contrast, detailed texture. The background is a soft, out-of-focus grey, highlighting the sharp edges and complex patterns of the ice crystals.

# **Emergency Management = Salt Reduction Strategies**

**Christine Walsh**





A hazard can be defined as: “A condition with the potential for harm to a community or environment”



# **Snow and Ice Emergencies**

- 365-day-per-year Operation
- Need a Comprehensive Plan
- Public Safety , Commerce and the Environment could be at risk
- Efficient and Effective Response

# Public Works/Highway Shops

We Are...

First Responders

Public Safety

Emergency Services



# Critical Infrastructure



**Winter weather waits for know  
one -75% of us will experience a  
Disaster!**





# November 11, 1940

## Armistice Day Blizzard!

- 162 People dead



# March 4 and 5, 1976

## Devastating Ice Storm!

- Ice accumulation reaches 5 inches
- Winds reaching 60 MPH
- 600,000 residents





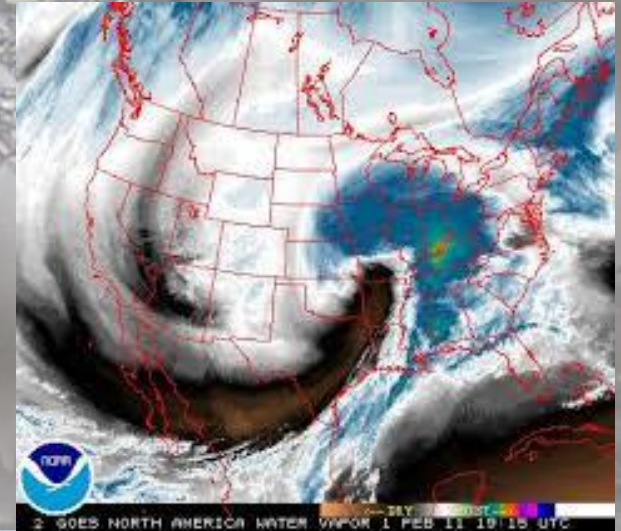
# February 2008

- Presidential Declaration
- 20 miles of I-90 were shut down



# 5 Mission Areas of Emergency Management

- Prevention
- Protection
- Mitigation
- Response
- Recovery





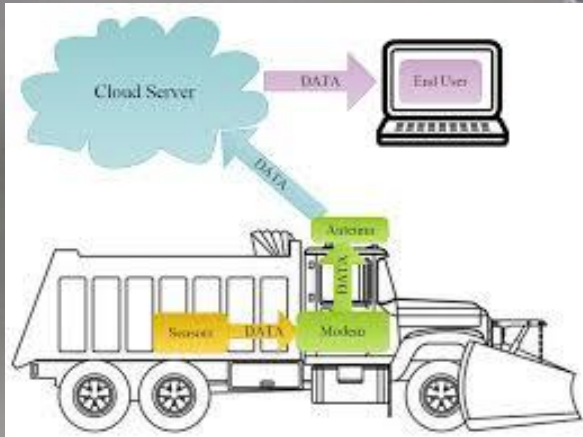
# Prevention

Avoid, prevent or stop an imminent threat



# Protection

## AVL, GPS





# Mitigation

Reduce or eliminate impacts and risks to people and property



# Response

Save lives, protect property, the environment and meet basic human needs





# Recovery

- Restore your community to pre-disaster conditions



# Core Capabilities

- Planning
- Public Information and warning
- Operational coordination





# Preparedness and Planning

- Enhances readiness to meet the demands of response and recovery
- Focuses on people and resources



# Planning

- Whose on your team??
- Snow and Ice Plan
- Ordinances
- Products
- Equipment





# Preparedness



# Public Information and Warning

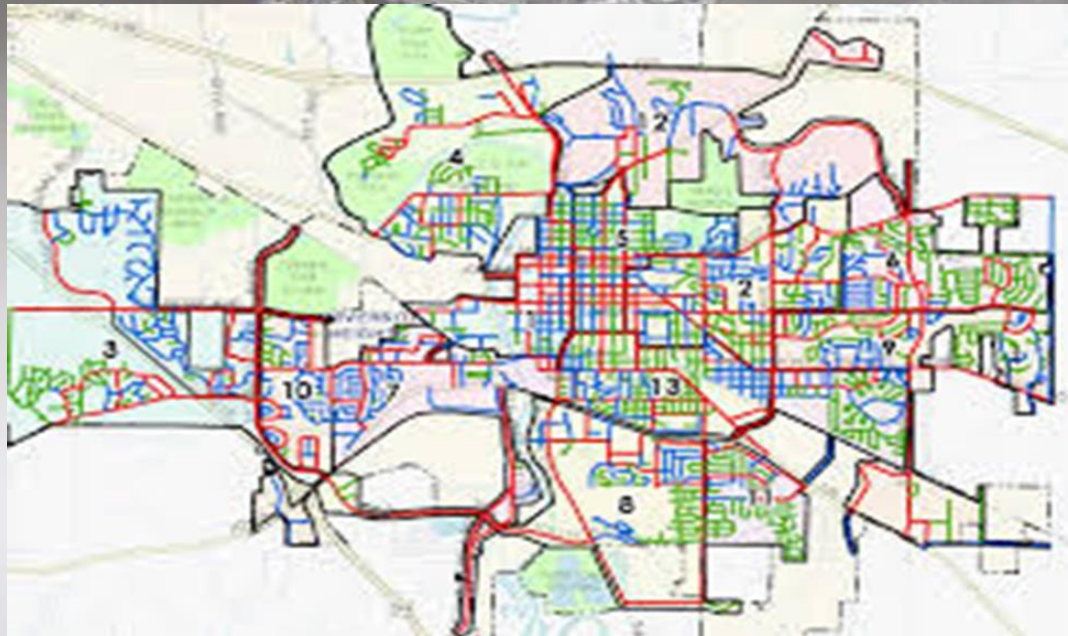
- Avoid the “disaster after the disaster”
- Emergency information vs. public information
- Audiences
- After Action Debriefing
- Spokesperson





# Operational Coordination

- Command and Support Agencies
- Routes



# **Emergency Management = Reduced Salt**

Both require and desire efficient and effective operations!





# **In Conclusion**

**Ask yourself, is your agency prepared to take on winter maintenance?**