

# Collaborating to Achieve Multiple Benefits of Water Resource and Transit Investments

May 9, 2019

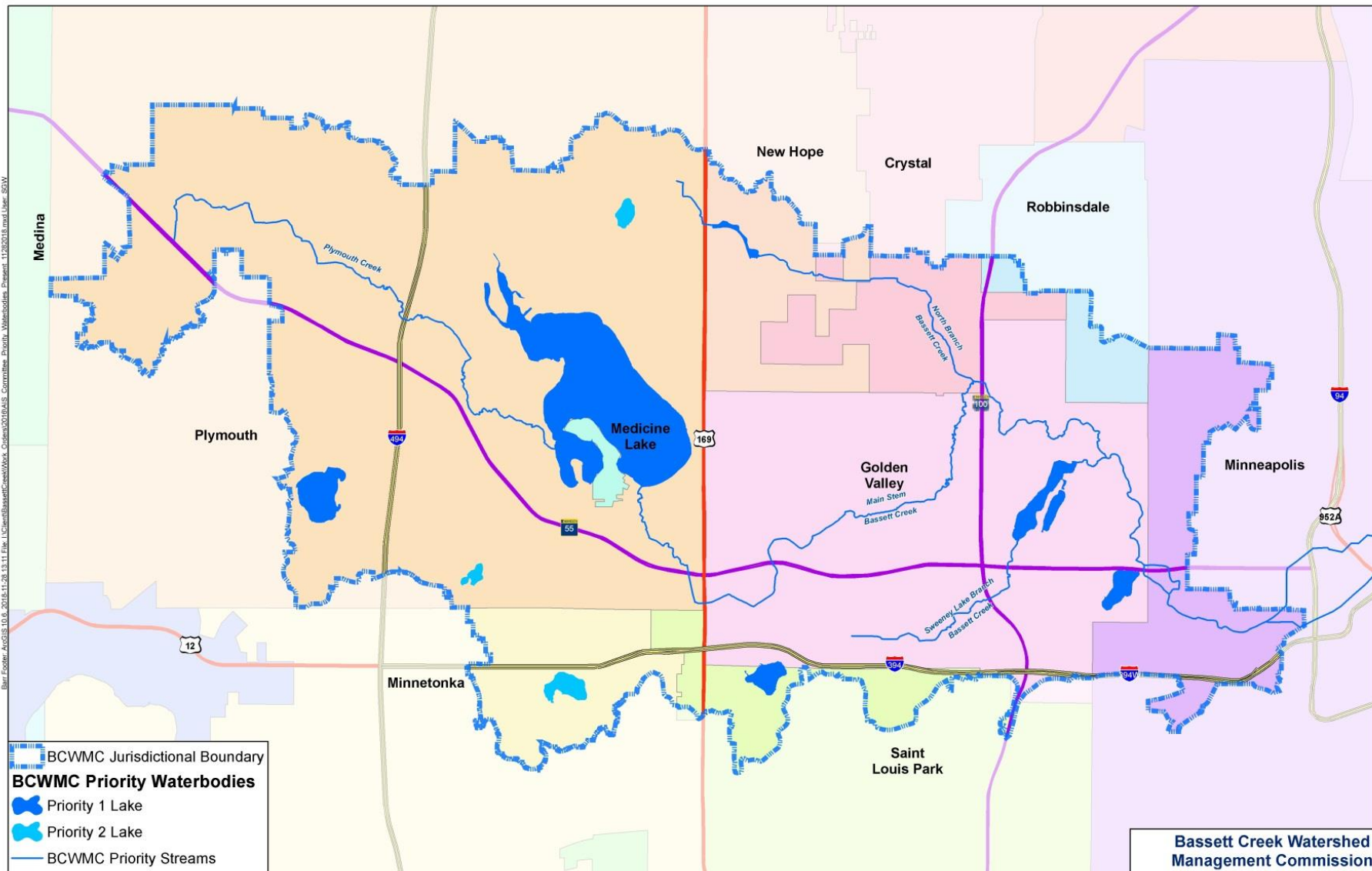
# Bassett Creek Watershed Management Commission

***Stewardship of water resources to protect and enhance our communities***



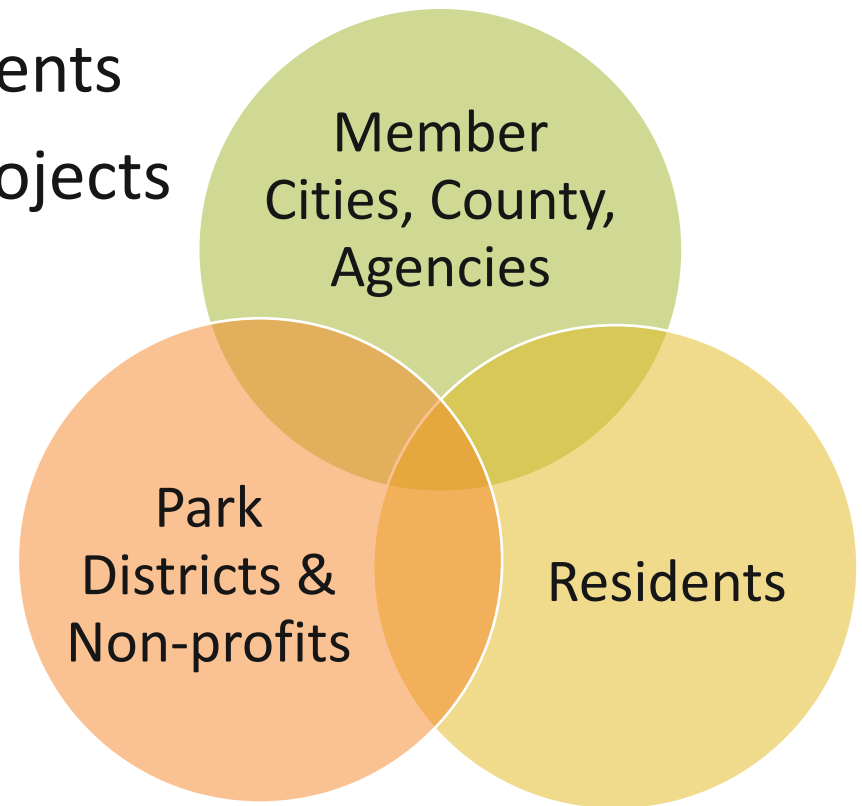
- Minneapolis
- Golden Valley
- Plymouth
- Crystal
- New Hope
- Robbinsdale
- St. Louis Park
- Minnetonka
- Medicine Lake



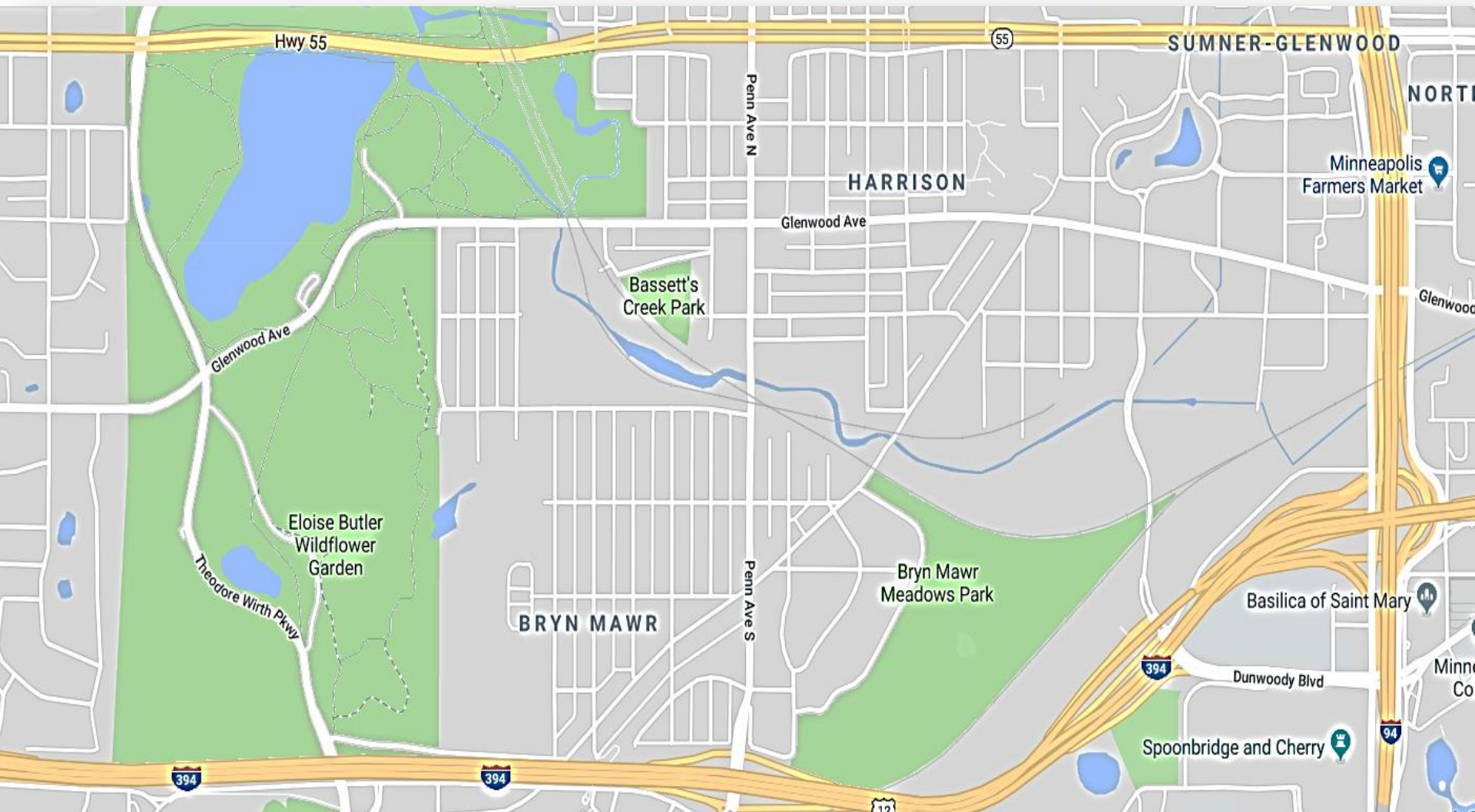


# Implementation thru Collaboration

- Monitoring and Planning
- Education
- Development Requirements
- Capital Improvement Projects



# Bassett Creek Valley





# Bassett Creek Flooding



Watershed  
Management  
Commission

# Basset Creek Tunnel Construction



Photo from Minnesota  
Historical Society

1938  
JUN.



# Bassett Creek Tunnels



Third Ave. Tunnel 1990



Second Street Tunnel  
1978



Double Box Culvert 1992



**Legend**

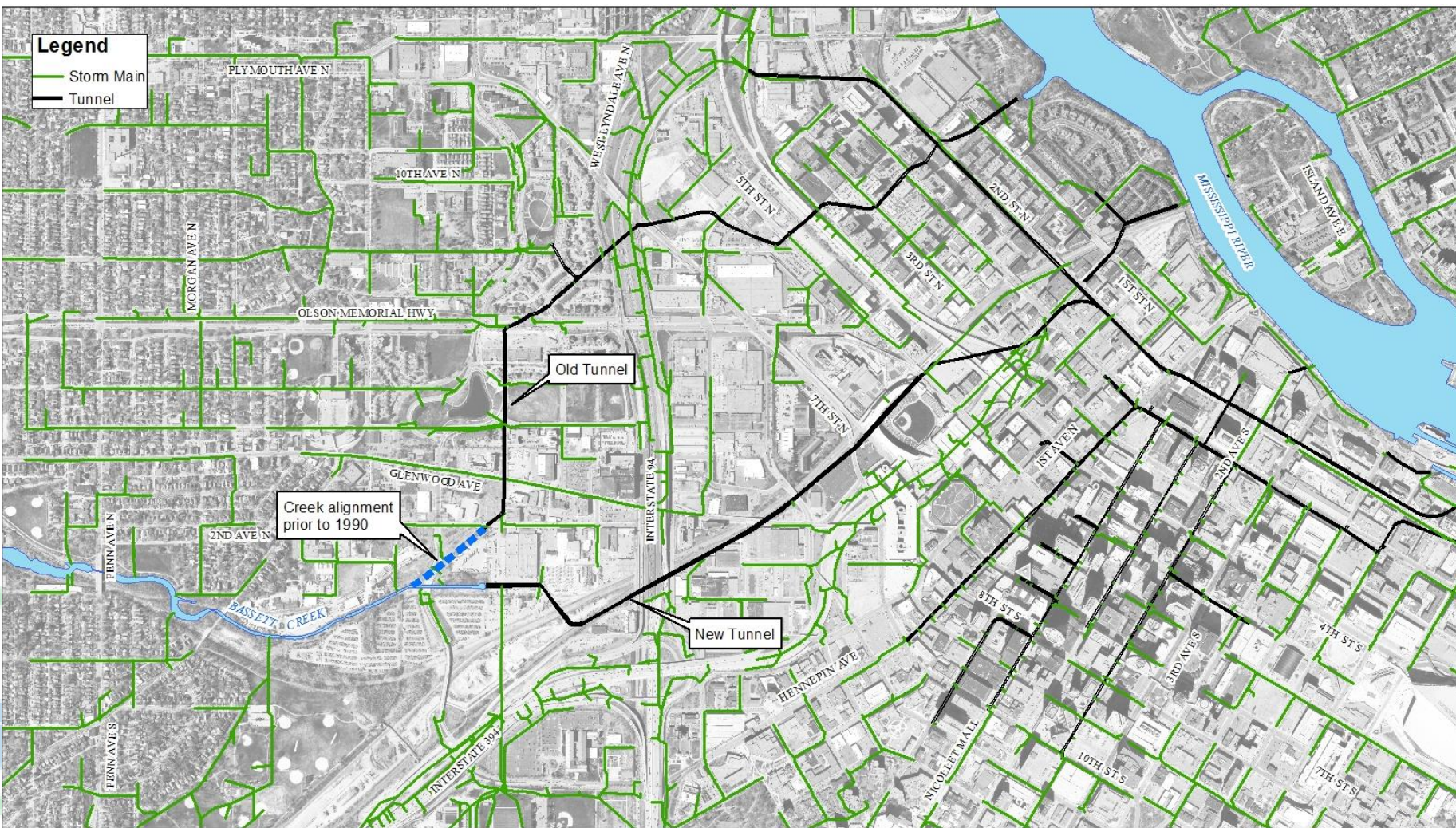
- Storm Main
- Tunnel

Old Tunnel

New Tunnel

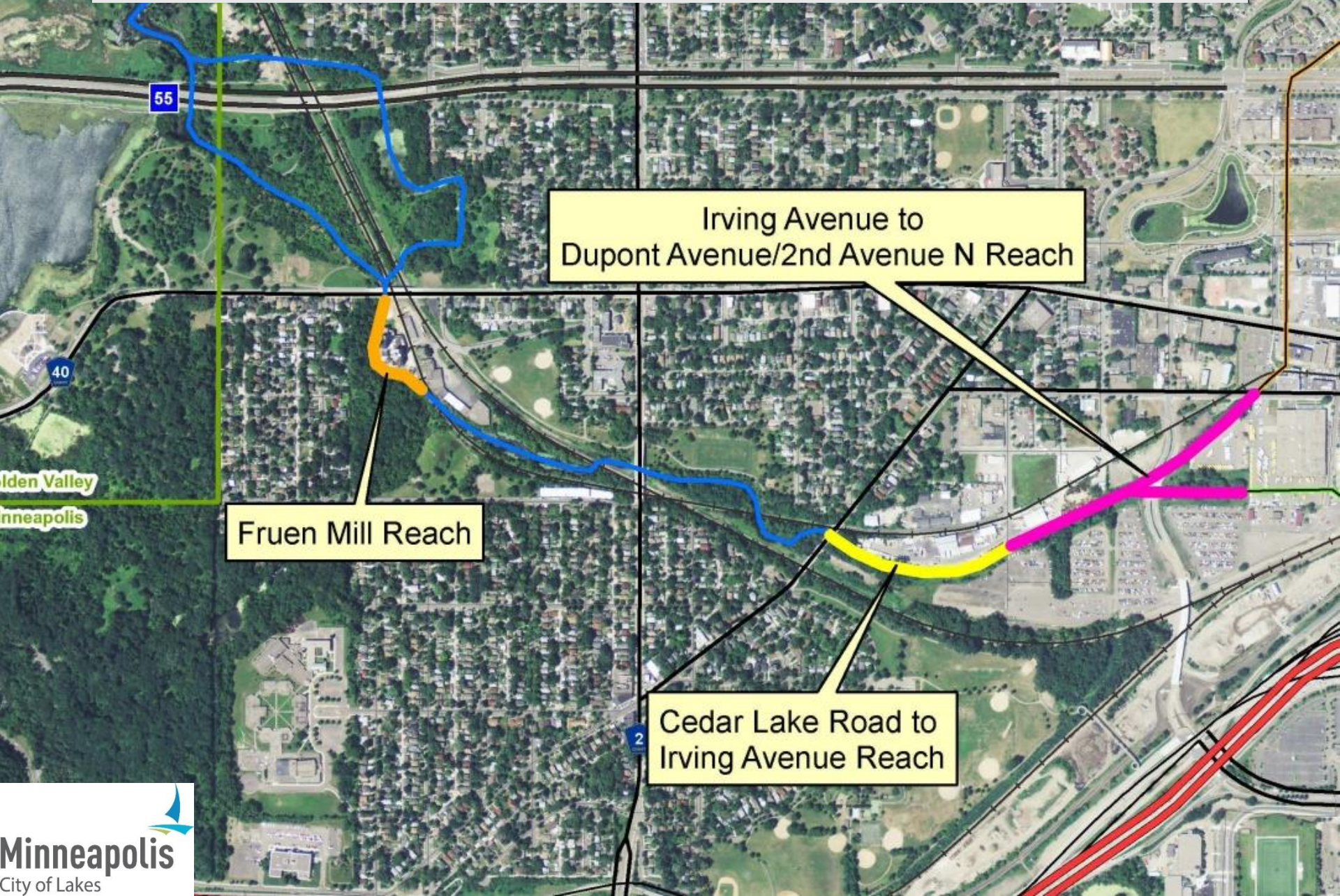
Creek alignment prior to 1990

Map labels include: PLYMOUTH AVE N, 10TH AVE N, WESTLYNDALE AVE N, 5TH ST N, 3RD ST N, 1ST ST N, OLSON MEMORIAL HWY, GLENWOOD AVE, 2ND AVE N, PENN AVE N, 2ND AVE S, 3RD AVE S, 4TH ST S, 5TH ST S, 6TH ST S, 7TH ST S, 8TH ST S, 9TH ST S, 10TH ST S, 11TH ST S, 12TH ST S, 13TH ST S, 14TH ST S, 15TH ST S, 16TH ST S, 17TH ST S, 18TH ST S, 19TH ST S, 20TH ST S, 21ST ST S, 22ND ST S, 23RD ST S, 24TH ST S, 25TH ST S, 26TH ST S, 27TH ST S, 28TH ST S, 29TH ST S, 30TH ST S, 31ST ST S, 32ND ST S, 33RD ST S, 34TH ST S, 35TH ST S, 36TH ST S, 37TH ST S, 38TH ST S, 39TH ST S, 40TH ST S, 41ST ST S, 42ND ST S, 43RD ST S, 44TH ST S, 45TH ST S, 46TH ST S, 47TH ST S, 48TH ST S, 49TH ST S, 50TH ST S, 51ST ST S, 52ND ST S, 53RD ST S, 54TH ST S, 55TH ST S, 56TH ST S, 57TH ST S, 58TH ST S, 59TH ST S, 60TH ST S, 61ST ST S, 62ND ST S, 63RD ST S, 64TH ST S, 65TH ST S, 66TH ST S, 67TH ST S, 68TH ST S, 69TH ST S, 70TH ST S, 71ST ST S, 72ND ST S, 73RD ST S, 74TH ST S, 75TH ST S, 76TH ST S, 77TH ST S, 78TH ST S, 79TH ST S, 80TH ST S, 81ST ST S, 82ND ST S, 83RD ST S, 84TH ST S, 85TH ST S, 86TH ST S, 87TH ST S, 88TH ST S, 89TH ST S, 90TH ST S, 91ST ST S, 92ND ST S, 93RD ST S, 94TH ST S, 95TH ST S, 96TH ST S, 97TH ST S, 98TH ST S, 99TH ST S, 100TH ST S.

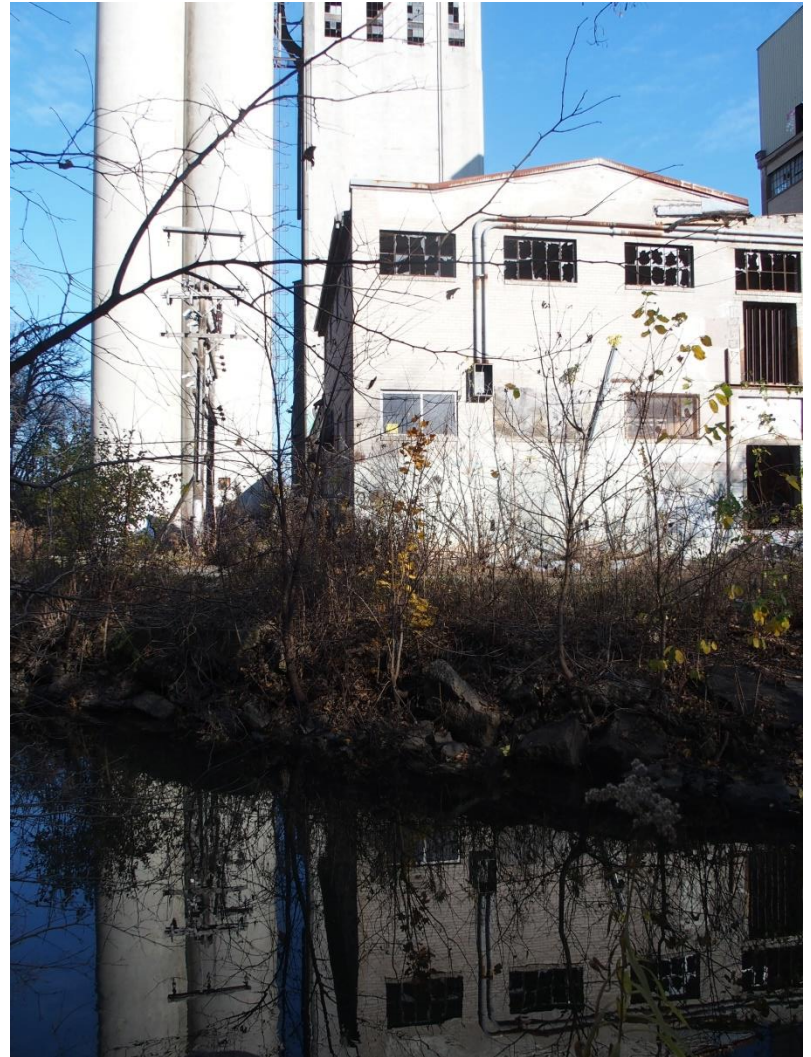




# Main Stem Erosion Repair Project







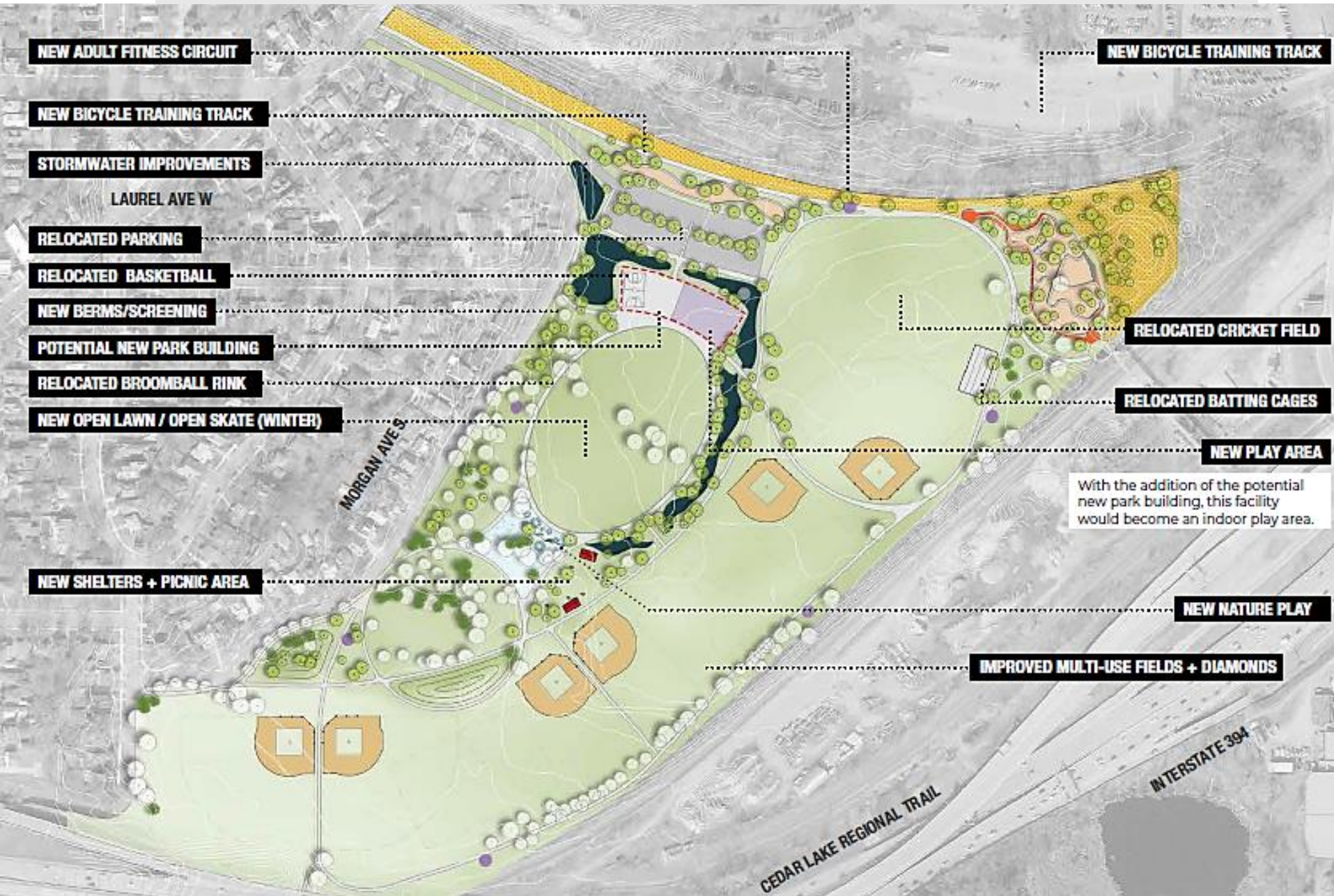
Management  
Commission







# Bryn Mawr Water Quality Improvement





# Basset Creek Tunnel Construction

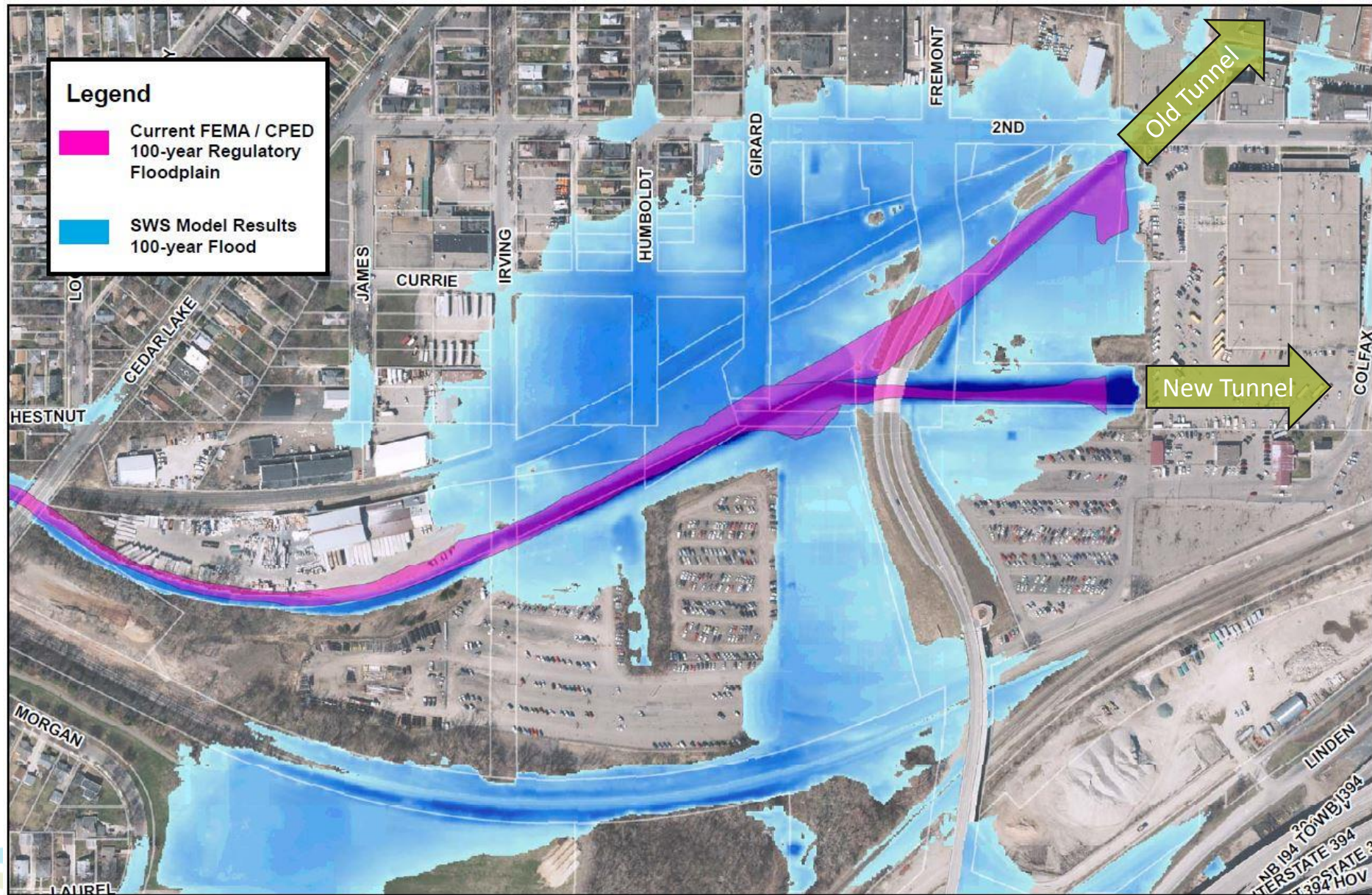
- Historical context
- Relatively shallow
- City built around and historically sometimes over
- Upstream development led to higher flows ... And flooding

Photo from Minnesota  
Historical Society

1911  
JUN.

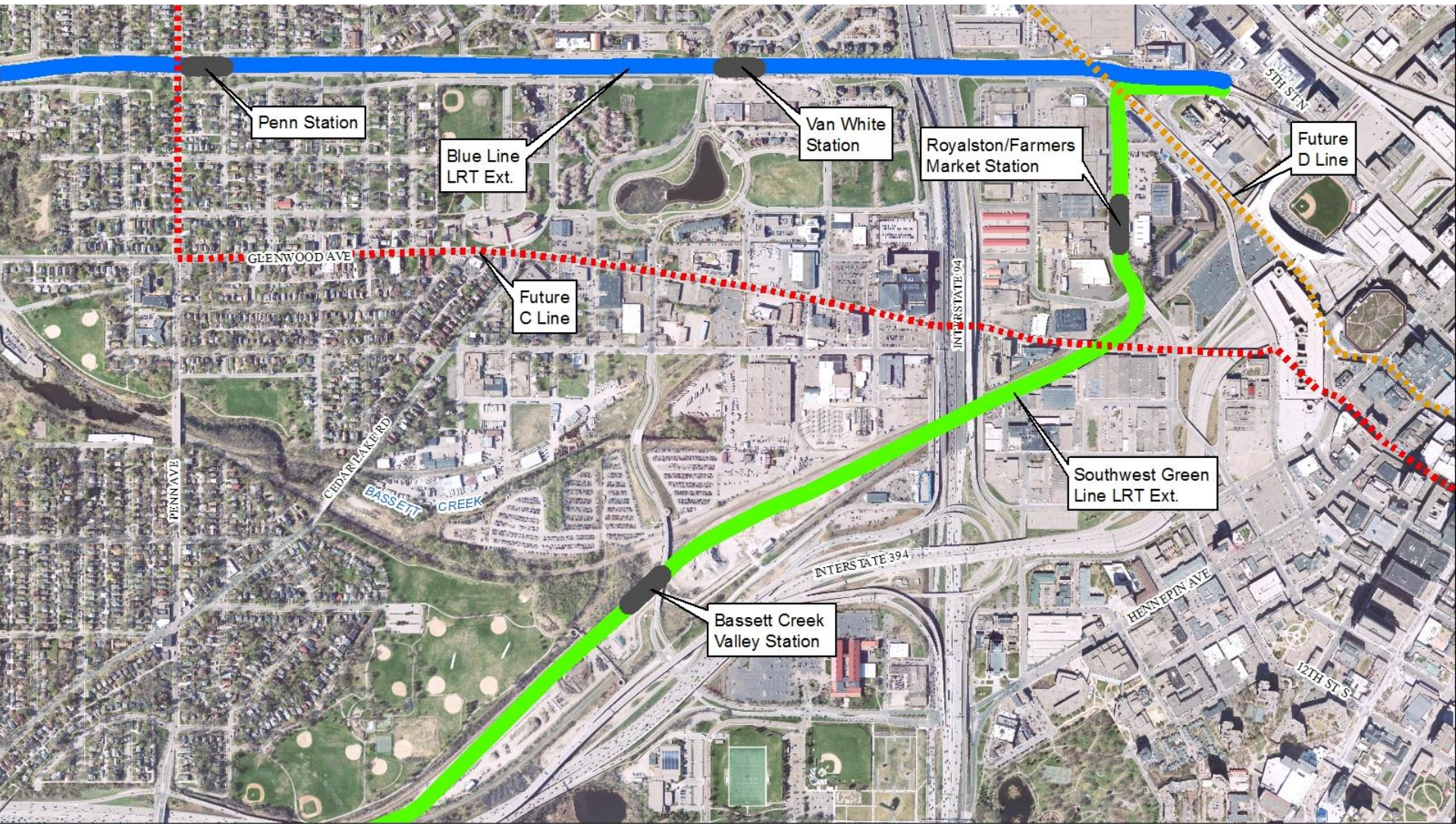


# Basset Creek Valley Flood Predictions



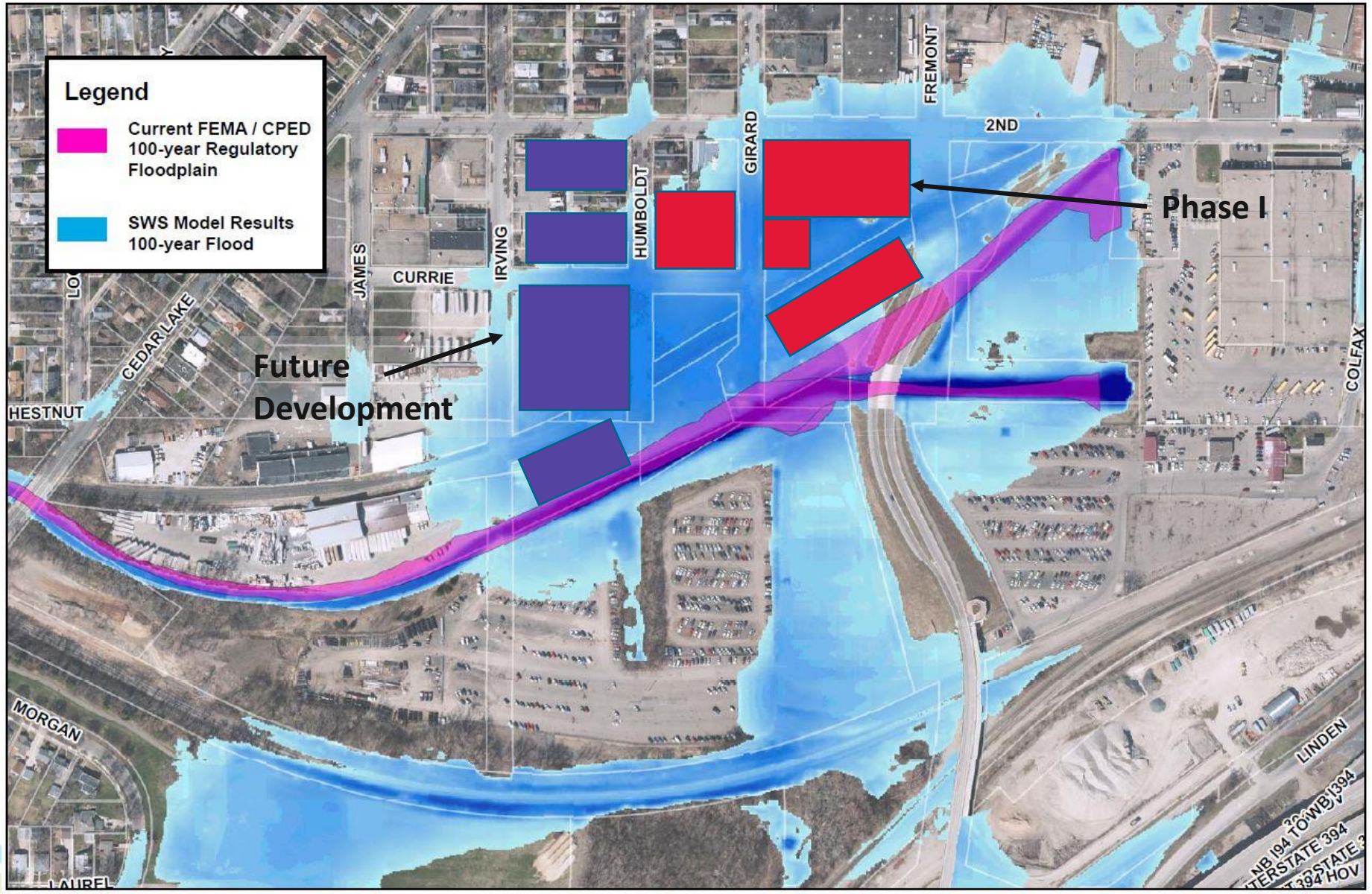


# Development Drivers





# Development Priorities





# Houston Flooding 2017

- Minneapolis's City-wide flood models and data help
  - Inform City-led and private development projects
  - Ensure future infrastructure & land use does not exacerbate flood problems in Minneapolis



Photo Source: ProPublica & Ars Technica

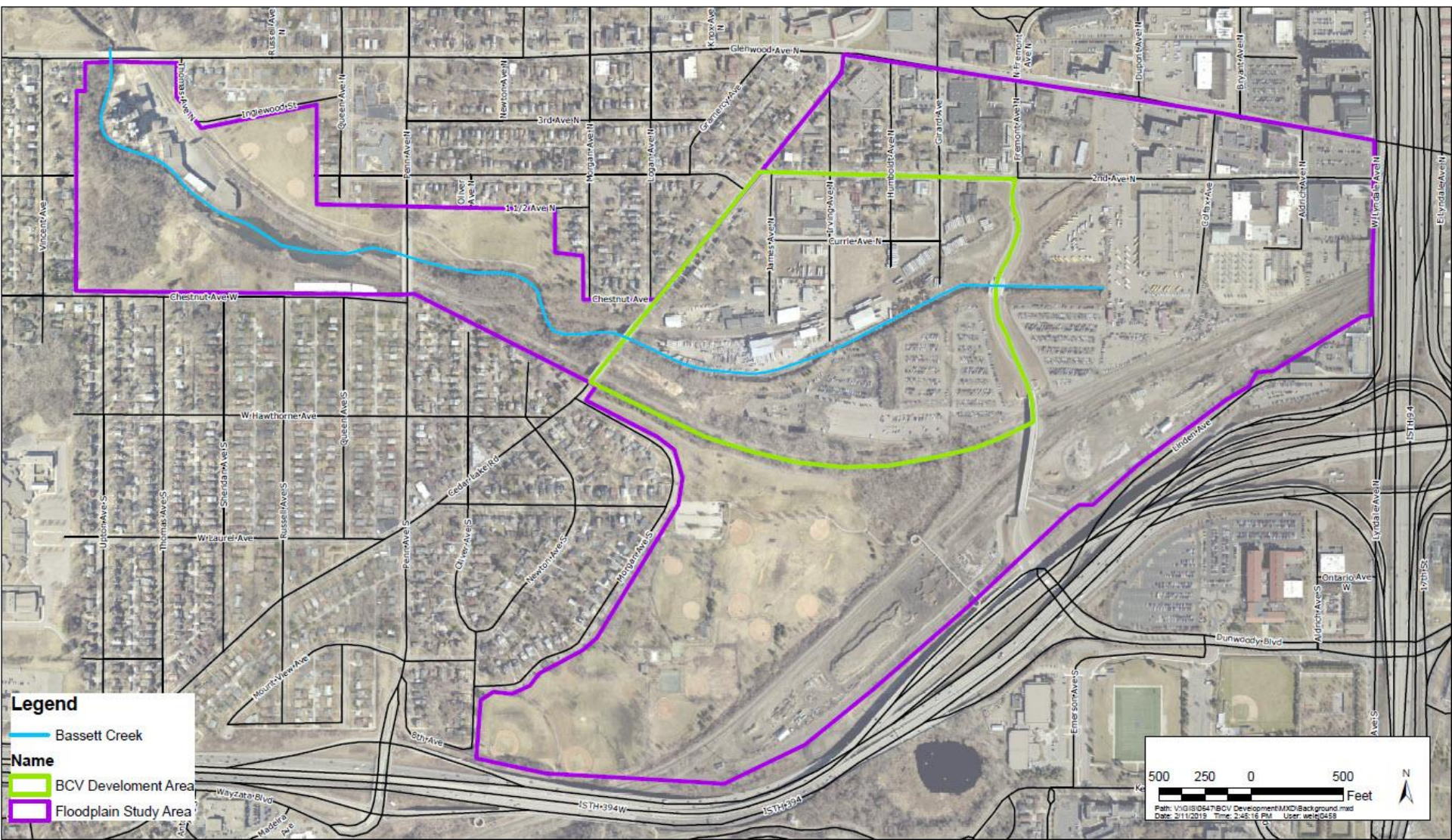
# Floodplain and Stormwater Study

- Led by BCWMC and City in coordination with MPRB
- To maximize redevelopment and recreation by developing a regional floodplain and stormwater management plan
- Use water quality and flood models to determine areas suited for floodplain storage and stormwater treatment
- Assume land use called for in City's 2040 Comp Plan





# Study Area





# Citizen Engagement – CPED

- Active community engagement
- Neighborhood coordination for all development proposals seeking grants/entitlements
- Bassett Creek Valley is special area given large areas owned and operated by the City



# Citizen Engagement – PW/SWS

- City capital budget requests are vetted through the citizen-led Capital Long Range Improvement Committee (CLIC)
  - Includes stormwater management and flood mitigation projects
  - Includes projects that change City infrastructure
- Once CLIC approves capital projects, Public Works will lead community engagement for individual projects

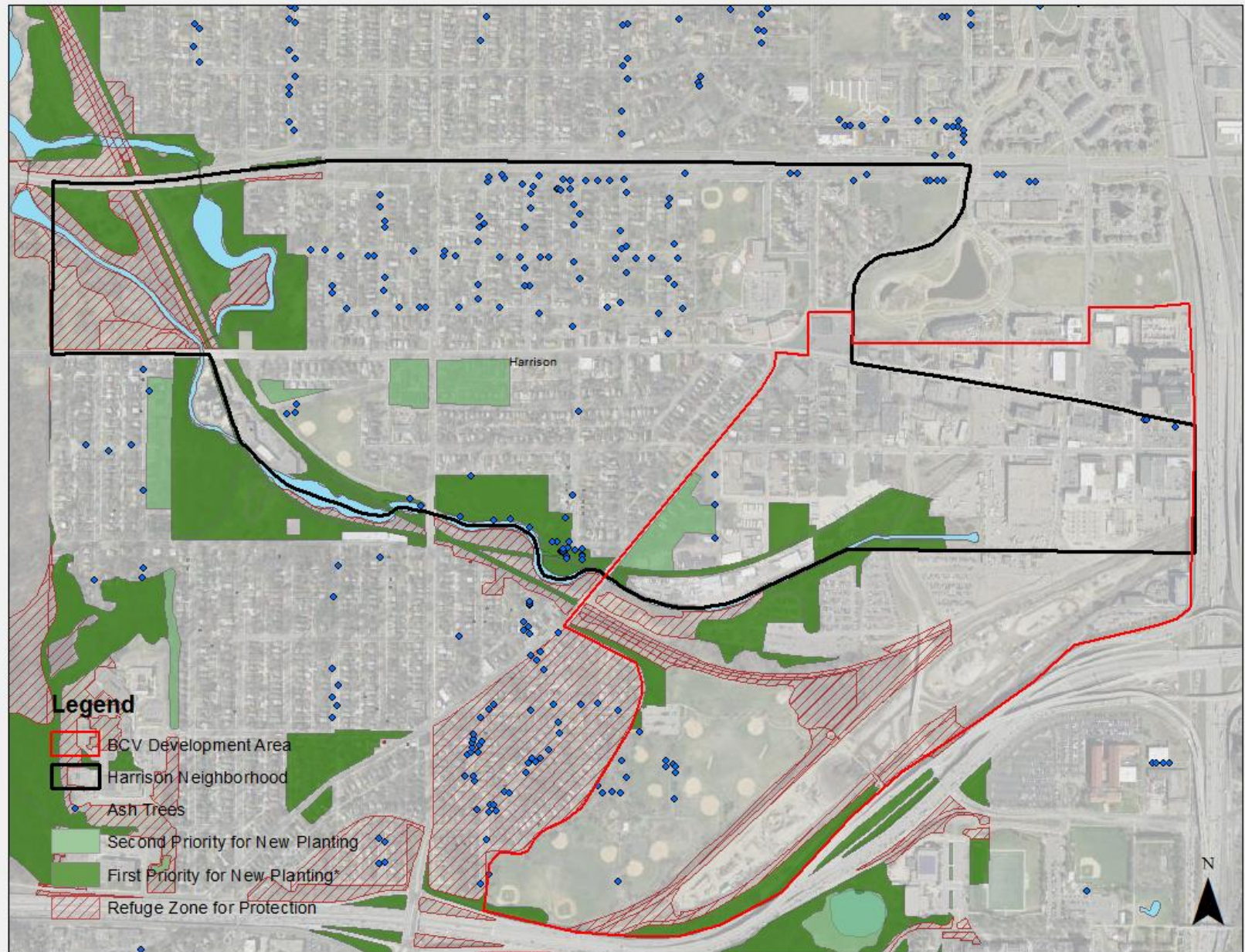




# Bridging the Gap

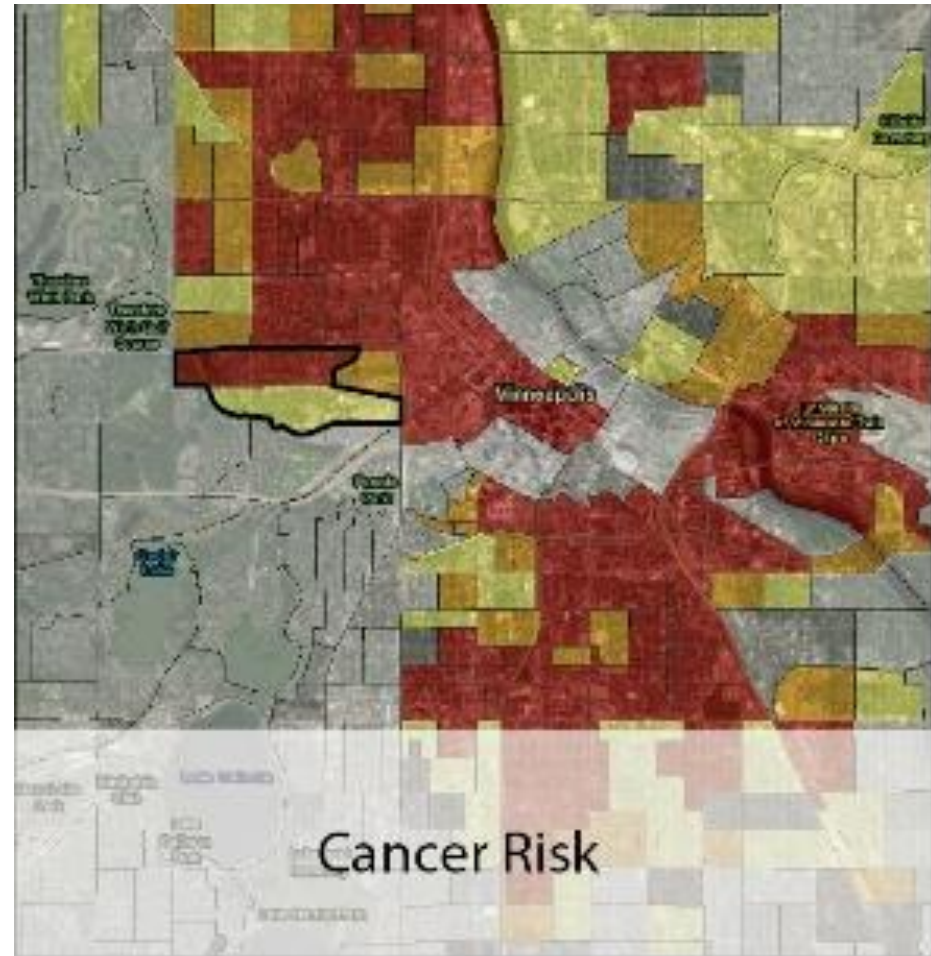
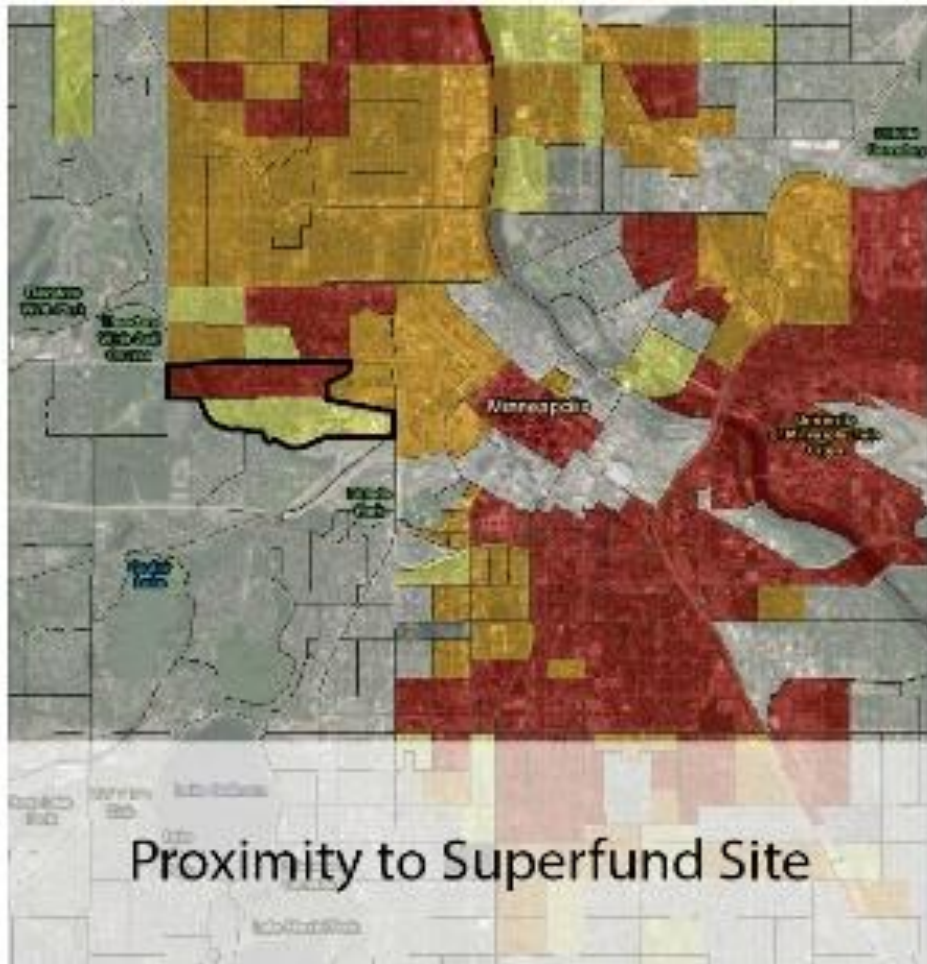
Serving People and Improving Water  
Quality in Bassett Creek Valley

# Mapping Resilience: Ash Trees + Habitat



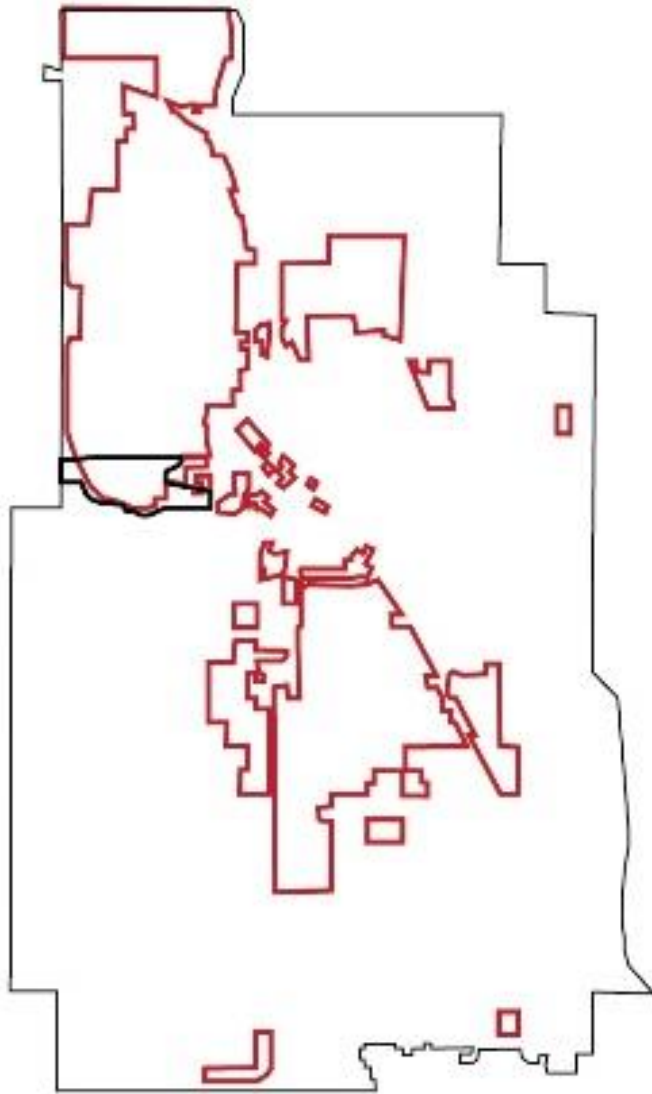


# Mapping Resilience: Environmental Risk

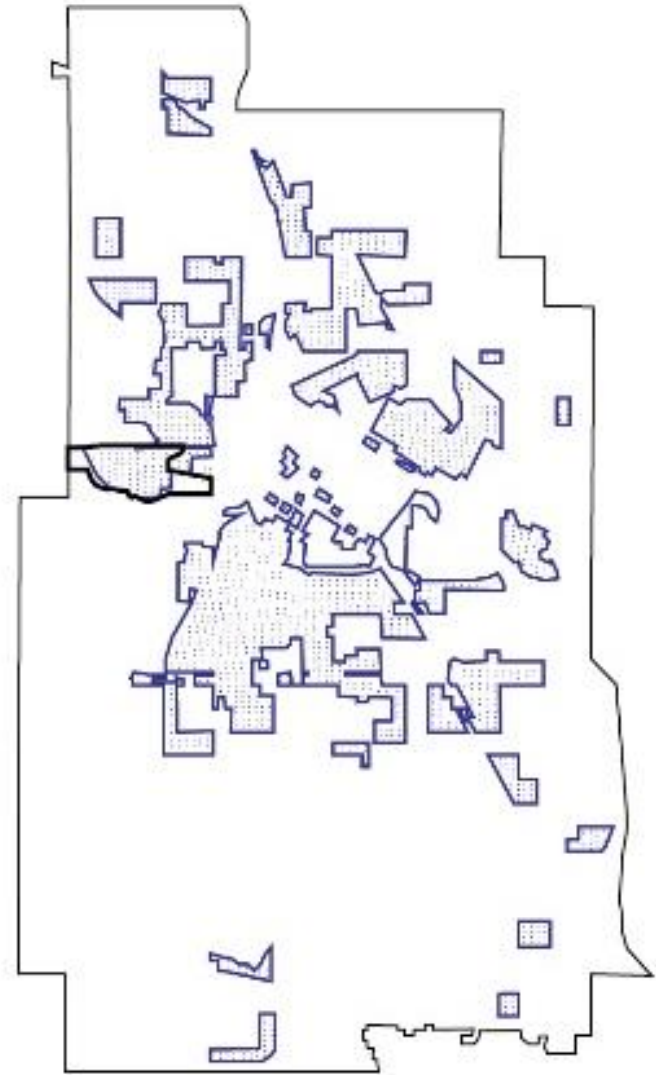


- 80 - 90 Percentile by block group
- 90 - 95 Percentile by block group
- 95 - 100 Percentile by block group

# Mapping Resilience: Marginalized Communities



People of Color > 45%



Households in Poverty



# Environmental Justice

- **Chronic Stressors:** brownfields, floodplains, high unemployment, homelessness, climate change, transitions in leadership, competing interests, access to Bassett Creek
- **Acute Shocks:** loss of tree canopy, pollution, development
- **Minneapolis Promise Zone:** encompasses much of Bassett Creek Valley. High unemployment, gun violence, housing blight, and poor educational outcomes





# Northside Neighborhoods Clean Water Initiatives



- **Collaboration**
- **Community Led**
- **Building Trust + Leadership**
- **Responsive**



# Engagement: Blooming Boulevards





# Engagement: Blooming Boulevards





# Engagement: Blooming Boulevards

- 37 properties
- 21 ash trees removed
- 10,825 sq ft habitat
- 416 pounds sediment
- 507,210 gallons runoff
- 2 pounds TP annually





# Career Pathways: Youth





# Career Pathways: Local Contractors



# Equitable Development

## **WATER QUALITY**

Is the project part of a larger stormwater treatment system?

Size of watershed captured.

TOTAL WQ: /44 Points

## **EQUITY: complete with neighborhood and members of the community**

Is the property owner/manager involved in the community?

Does the site advance community goals, priorities, and criteria for growth/investment?

TOTAL EQ: /28 Points

**SUSTAINABILITY:** Is the existing site well maintained? TOTAL SUS: /28 Points

WQ Score + EQ Score + SUS Score = /100





# Renter Engagement

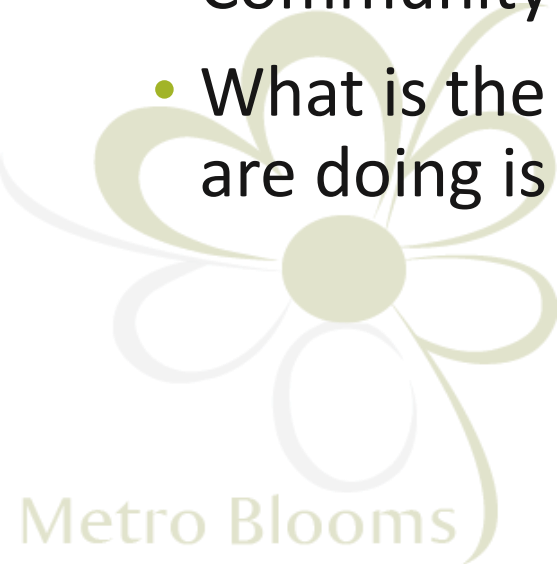


Improving quality of life  
through outdoor spaces



# Lessons Learned

- Project design influences who benefits from project investments
- Outreach and education should reach all watershed stakeholders, not just property owners
- Community engagement is critical to success
- What is the focus? How you frame the work you are doing is key





Lisa Goddard  
City of Minneapolis Water Resources  
Project Manager  
[Lisa.goddard@minneapolismn.gov](mailto:Lisa.goddard@minneapolismn.gov)  
[ci.minneapolis.mn.us](http://ci.minneapolis.mn.us)



Laura Jester  
BCWMC Administrator  
[Laura.jester@keystonewaters.com](mailto:Laura.jester@keystonewaters.com)  
[bassettcreekwmo.org](http://bassettcreekwmo.org)



Laura Scholl  
Metro Blooms Associate Director  
[laura@metroblooms.org](mailto:laura@metroblooms.org)  
[metroblooms.org](http://metroblooms.org)

