

Campus Greening By Way
of:

Alternative Stormwater
Compliance

+

School Community
Engagement

@ Lake and Middleton Schools
– Woodbury, MN

Andy Schilling



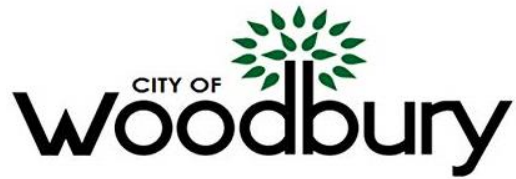
SOUTH WASHINGTON
WATERSHED DISTRICT

Diana Preisen





OWNER



ENFORCER | COLLABORATOR



DESIGNER | PROJECT MANAGER



COMMUNITY BUILDER | TREE INSTALLER



LAKE AND MIDDLETON CAMPUS GREENING PROJECT

GOALS

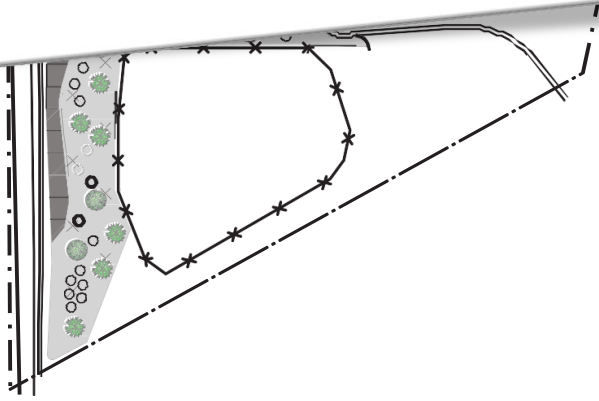
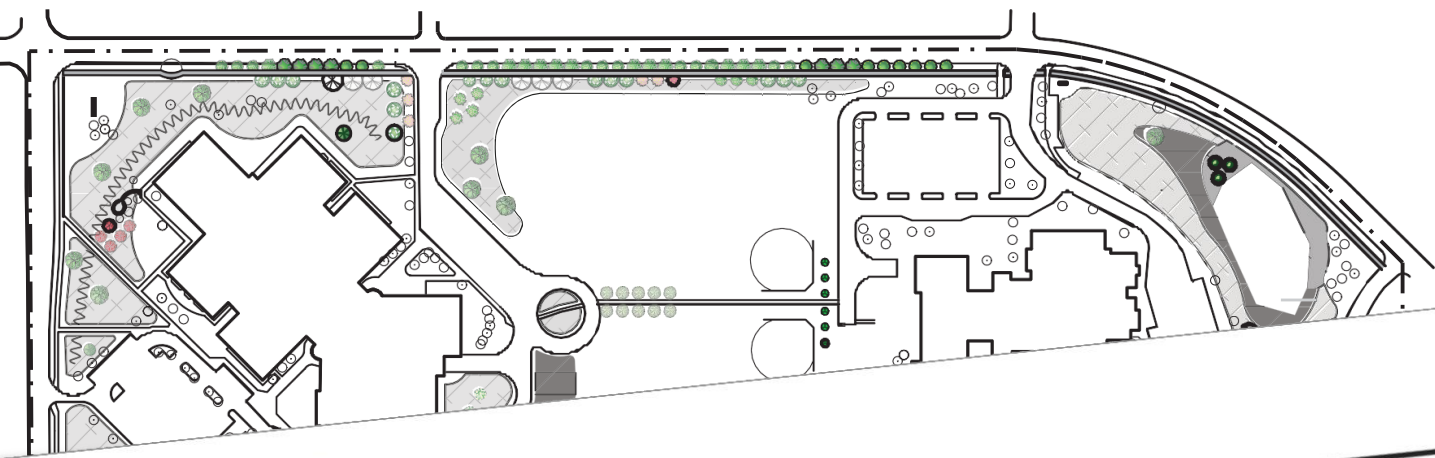
DESIGN TO FIT SWWD GREENWAY PLAN CORRIDOR
MEET REQUIRED SITE IMPROVEMENTS IMPOSED BY CITY
CREATE OUTDOOR LEARNING ENVIRONMENT

Landcover Analysis:

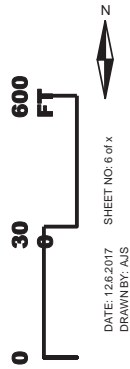
		Lake and Middleton	
Category	Unit	Qty	% of total
Total Area*	Ac	93.0	100%
Buildings + Impervious areas	Ac	15.5	17%
Unmowed/Perennial Areas (including pond)	Ac	8.8	9%
Turf/Mowed Areas	Ac	69.7	75%
Trees	count	150	10 species

COMPONENTS

- 15.3** ACRES CONVERTING FROM NON-ACTIVE USE TURF TO PRAIRIE
- 200** TREES PLANTED ON SITE
- 67** TREES PLANTED BY STUDENTS FROM EACH SCHOOL



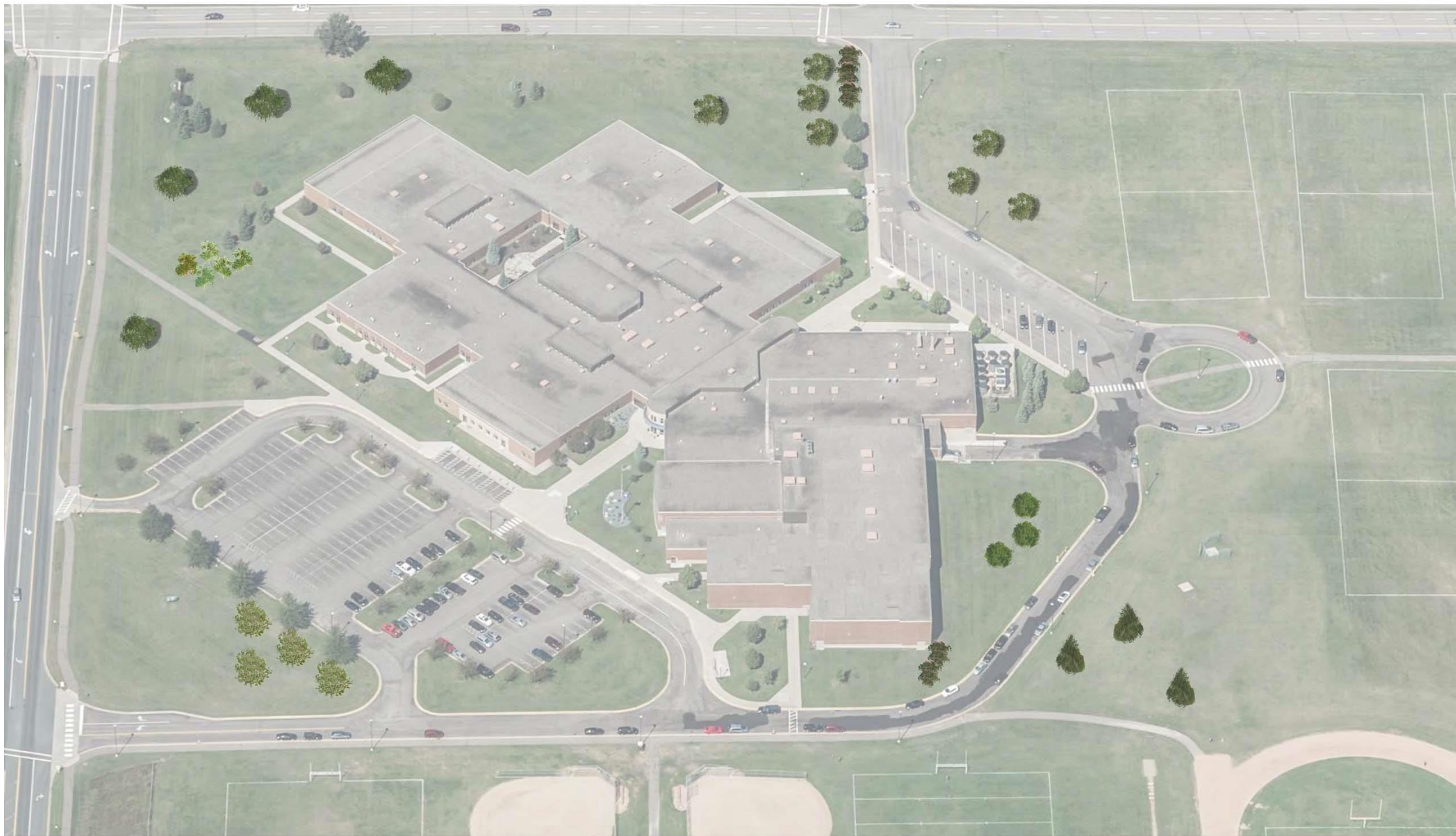
LAKE AND MIDDLETON CAMPUS GREENING TREE AND SEEDING PLAN

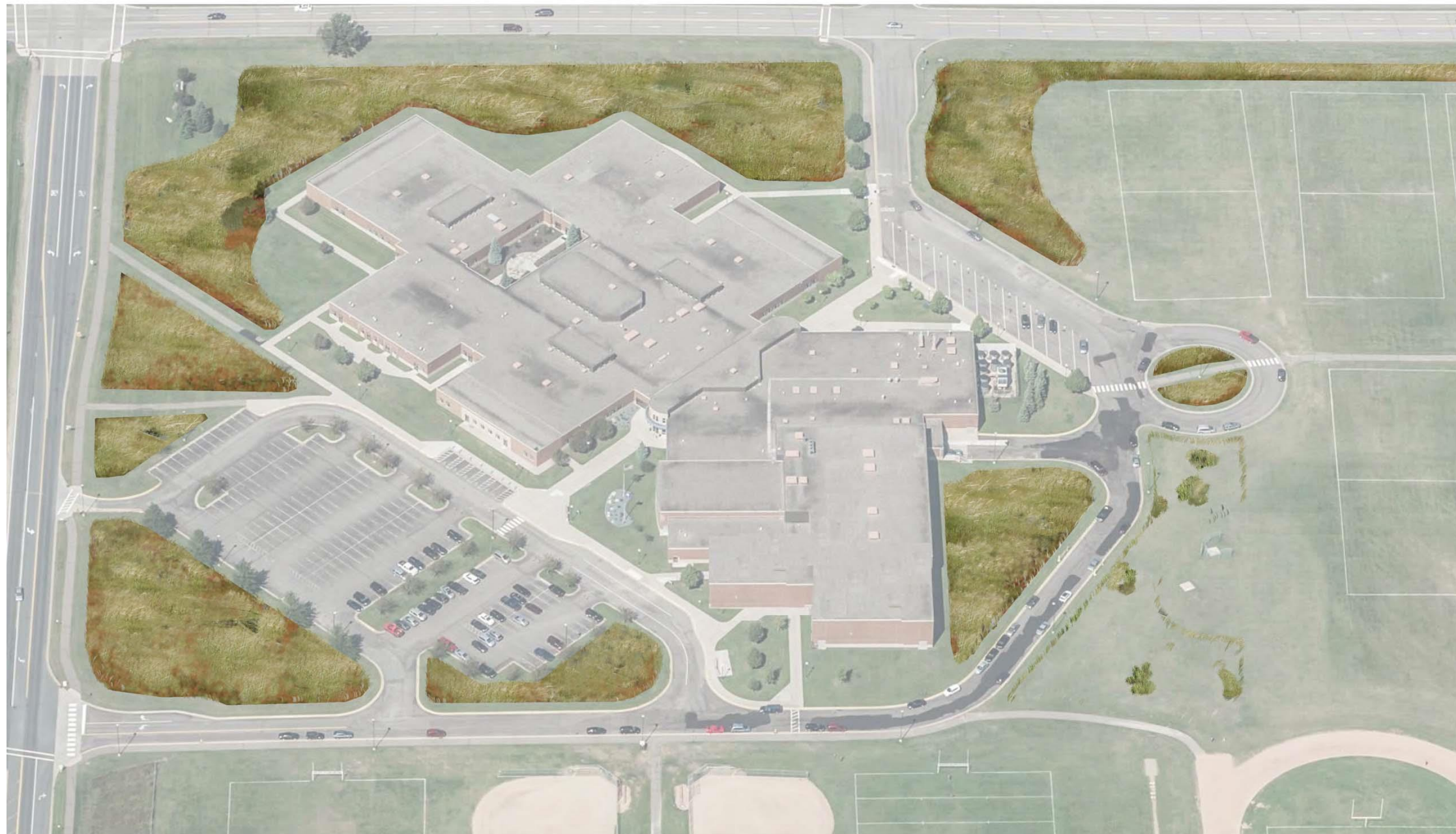


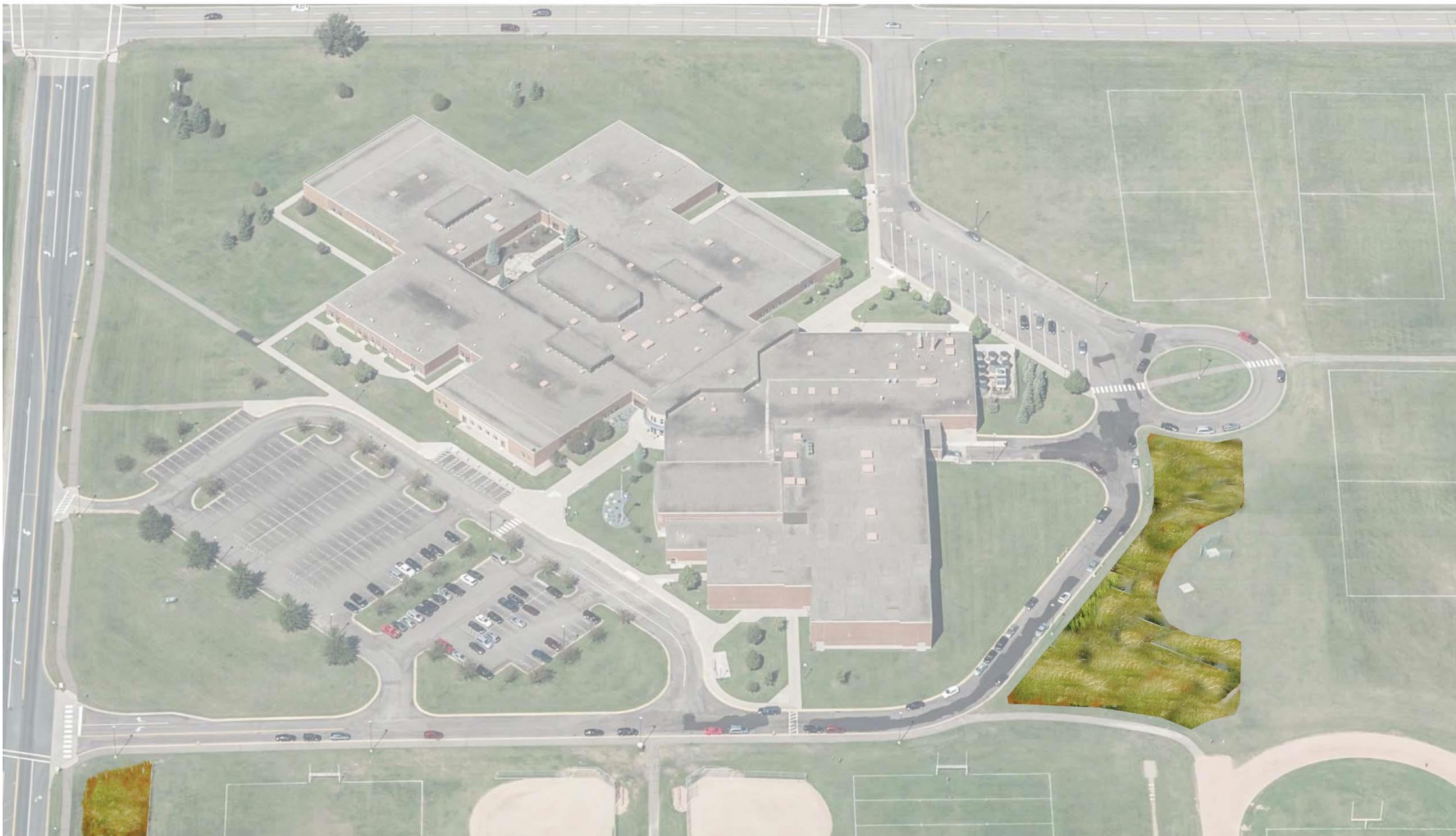
DATE: 12/2/2017 SHEET NO. 6 of x
DRAWN BY: AJJ

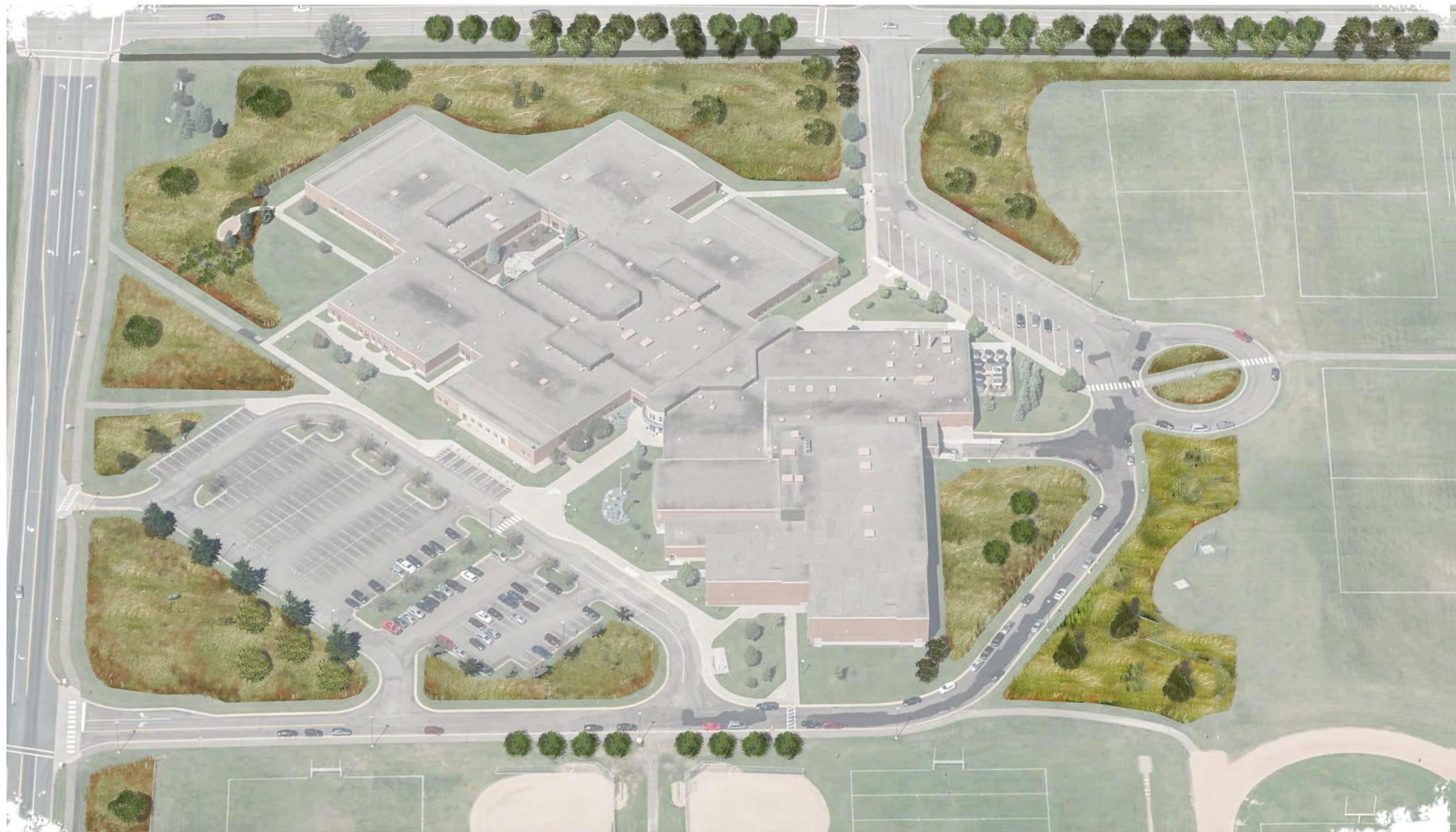












United States, MN, Washington
Co.; Woodbury





















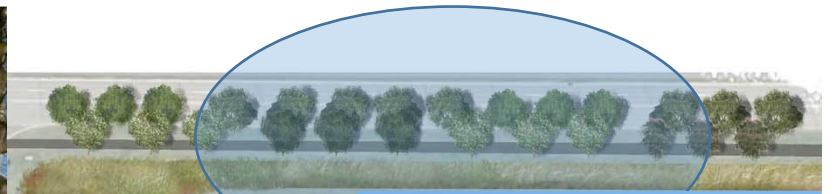
© Janet Davis - All Rights Reserved



Photo Credit: Fonghong



Photo Credit: Muriel Bendel



School Community Engagement



Who We Are

Tree Trust is a nationally recognized, Minnesota non-profit corporation founded in 1976. Our mission is to improve the community and environment by investing in people.



What is our Learning With Trees Program?

- We help schools plan, plant, celebrate and teach in outdoor environmental learning areas on their school grounds
- Since 1992, we have:
 - ▣ Completed projects at 180 schools
 - ▣ Educated over 95,000 students
 - ▣ Planted approximately 15,000 trees & shrubs



Learning with Trees at Lake Middle School and Middleton Elementary School

- ▣ Green Team
- ▣ Classroom education
- ▣ Community volunteer support
- ▣ School planting day
- ▣ Teacher training



Learning with Trees at Lake Middle School and Middleton Elementary School

Classroom Education - Middleton

Our Town Trees Exhibit

Enlisted help from local volunteers such as Master Water Stewards, Master Gardeners and Tree Care Advocates.



Learning with Trees at Lake Middle School and Middleton Elementary School

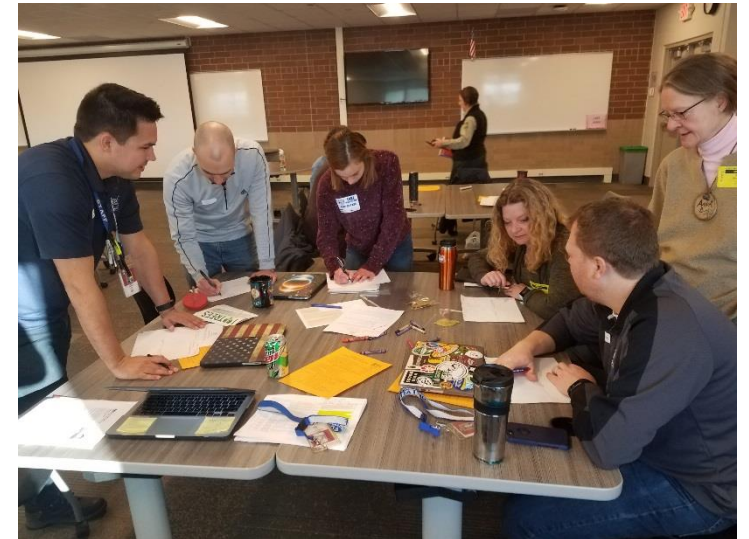
Classroom Education – Lake Middle School

Guest speakers

- South Washington Watershed District
- US Forest Service

Teacher training

- Project Learning Tree



Learning with Trees at Lake Middle School and Middleton Elementary School

Middleton Elementary School School Planting Day

- 27 Classes totaling 730 students
- Almost 60 parent volunteers
- 5 community volunteers
 - Master Water Stewards
 - Master Gardeners
 - Branch Managers from Tree Trust
- 30 trees planted on school property (by the students!)



Learning with Trees at Middleton Elementary



Learning with Trees at Lake Middle School and Middleton Elementary School

Lake Middle School Planting Day

- ❑ 15 Life Sciences classes totaling 430 students.
- ❑ 12 community volunteers
 - ❑ Master Water stewards
 - ❑ Master Gardeners
 - ❑ Branch Managers
 - ❑ Staff from US Forest Service
 - ❑ Staff from SWWD
 - ❑ Staff from Tree Trust
- ❑ 37 trees planted
- ❑ Grow with KARE



Learning with Trees at Lake Middle School



Ma
De
Thr
coll
Dis
qua
env
The

Thi
a ur
opp

Tre
Lea
gro
stuc

The
eac
you

Sec

Mo



2018 LAKE AND MIDDLETON CAMPUS GREENING PROJECT IN-PROGRESS

- » CONVE
- » PLANT
- » INSTAL



FOR PROJECT IN
SOUTH WASHING
651.714.3729 OR VISIT WWW.SWVMDMN.ORG





**Prairie Restoration
in Progress**

Native prairies need time to grow. Once established, they will provide a diverse habitat for pollinators, birds, people and wildlife.

woodburygardensolutions woodbury

Questions?

