



Photo by Randy Wendel

# Normandale Lake

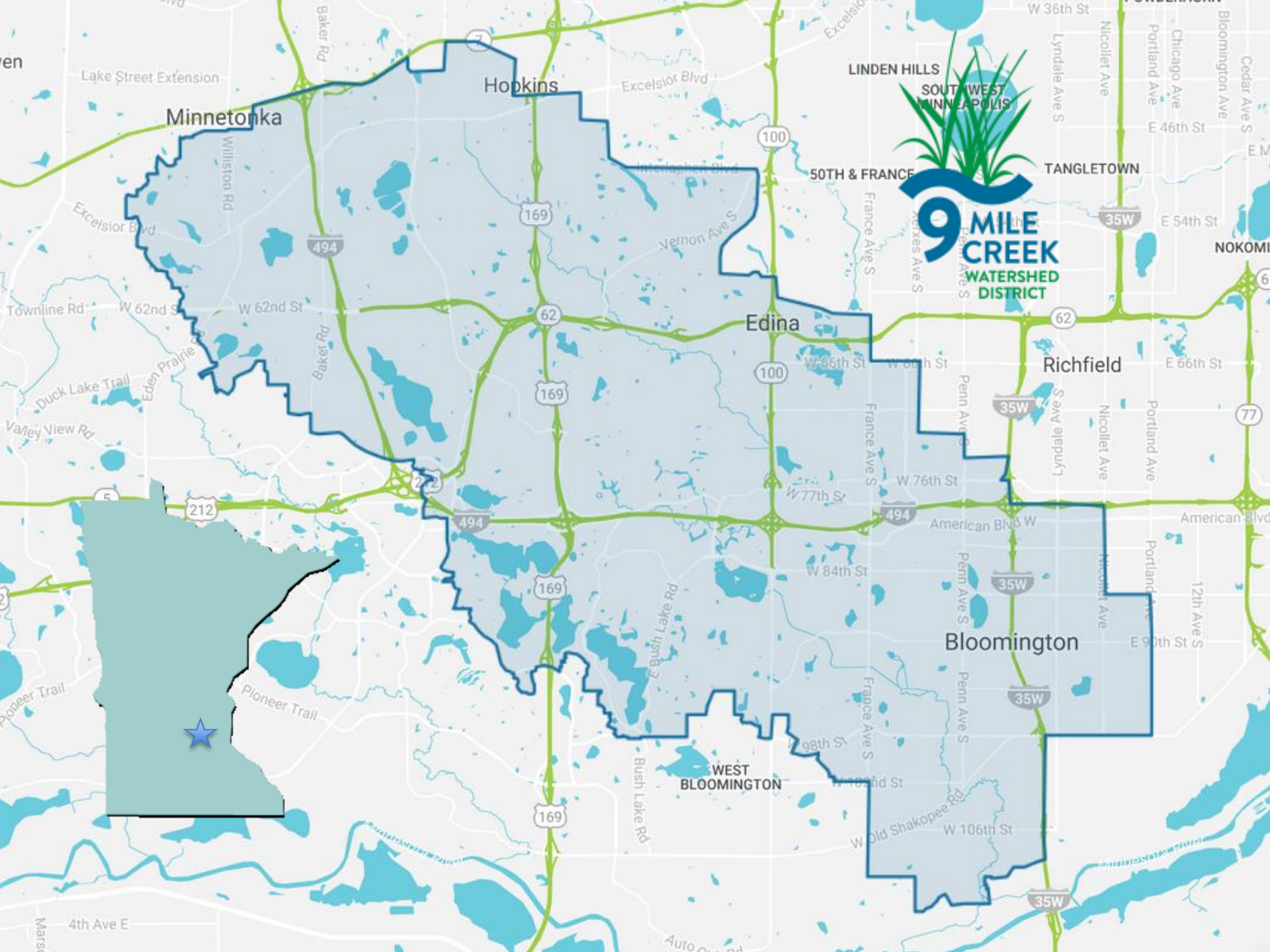
## Water Quality Improvement Project

Erica Sniegowski, Program & Project Manager, NMCWD

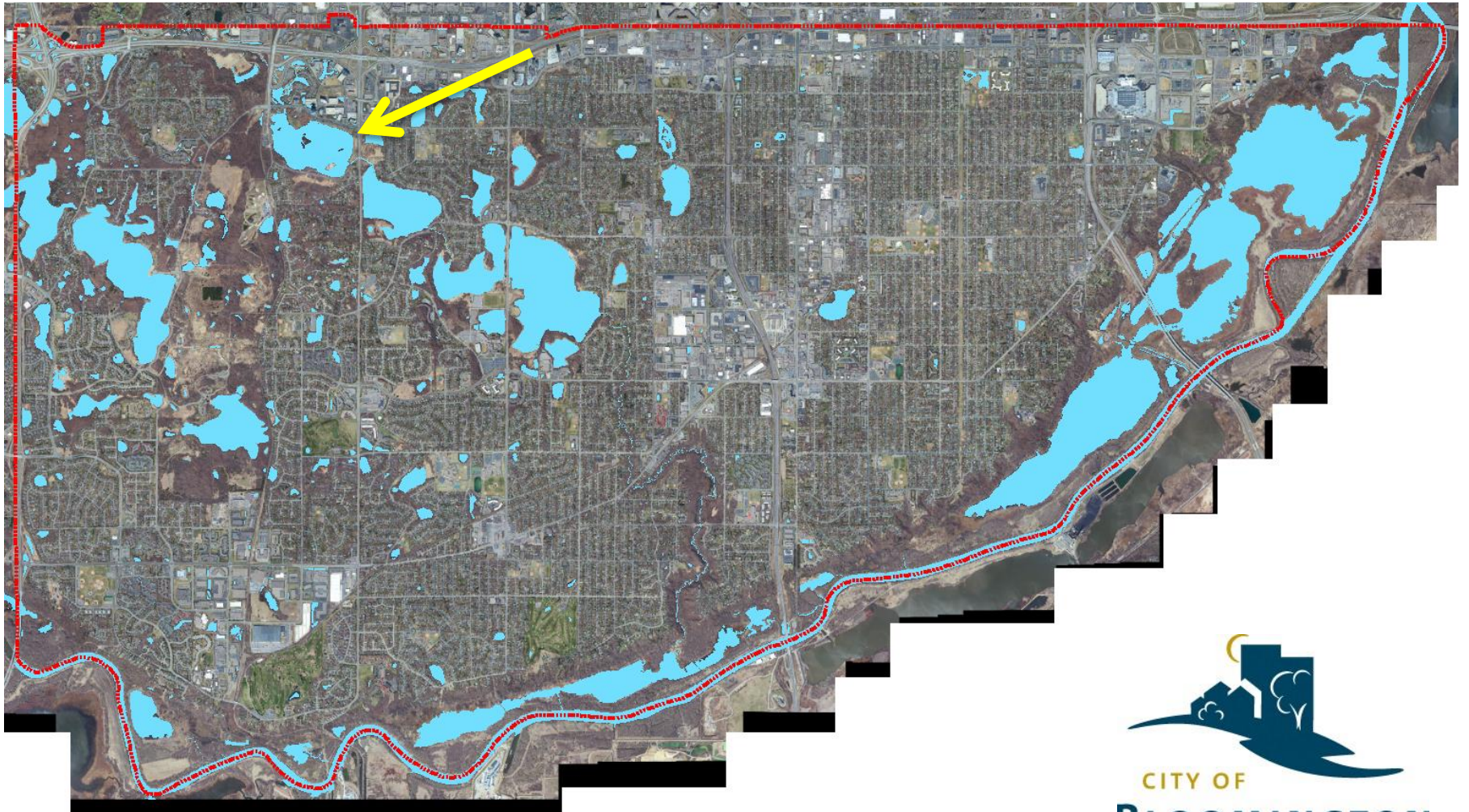
Steve Gurney, Water Resource Specialist, City of Bloomington















# Normandale Lake

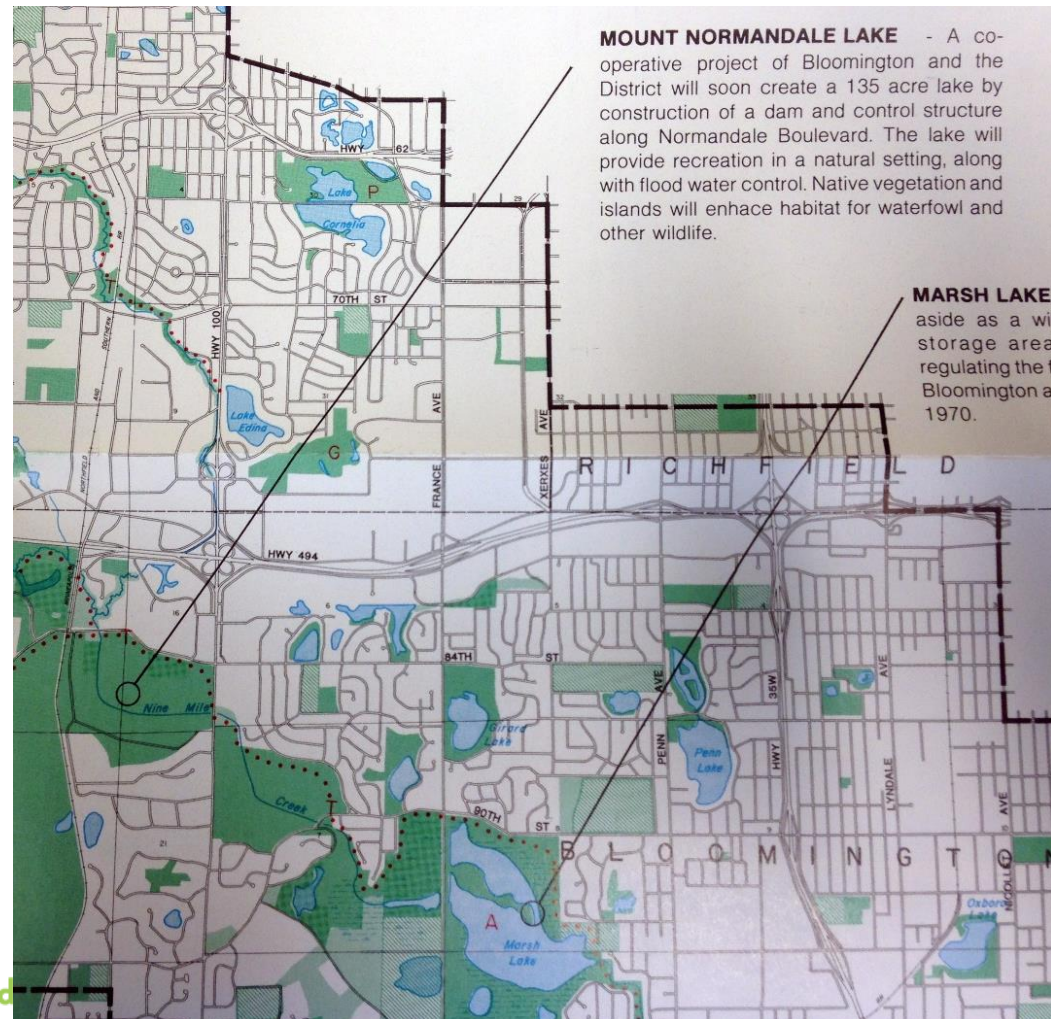


Created in late-1970s

116 acres

3 foot average depth

Creek flows through it



**MOUNT NORMANDALE LAKE** - A co-operative project of Bloomington and the District will soon create a 135 acre lake by construction of a dam and control structure along Normandale Boulevard. The lake will provide recreation in a natural setting, along with flood water control. Native vegetation and islands will enhance habitat for waterfowl and other wildlife.

**MARSH LAKE** aside as a will storage area regulating the flow of water from the Nine Mile Creek into the Mississippi River. The lake was created in 1970.

Understand

1976 District map, notes location of future Normandale Lake



# Normandale Lake



## Public Perspective

Looks bad

Too many plants

Too much algae

Smells bad

## District Perspective

High phosphorus levels

Lots of aquatic plants & attached algae

Abundant curly-leaf pondweed

Low oxygen levels





# Normandale Lake Project



Management Practice	Proposed Timing	Estimated Cost
Lake Drawdown	Fall 2018	\$310,000-\$420,000
Alum Treatment	Spring 2019	\$140,000
Herbicide Treatment (2-5 Years)	Spring 2020	\$100,000 per year





# Desired Project Outcomes



**Reduce internal phosphorus loading**

**Improve native aquatic plant community**

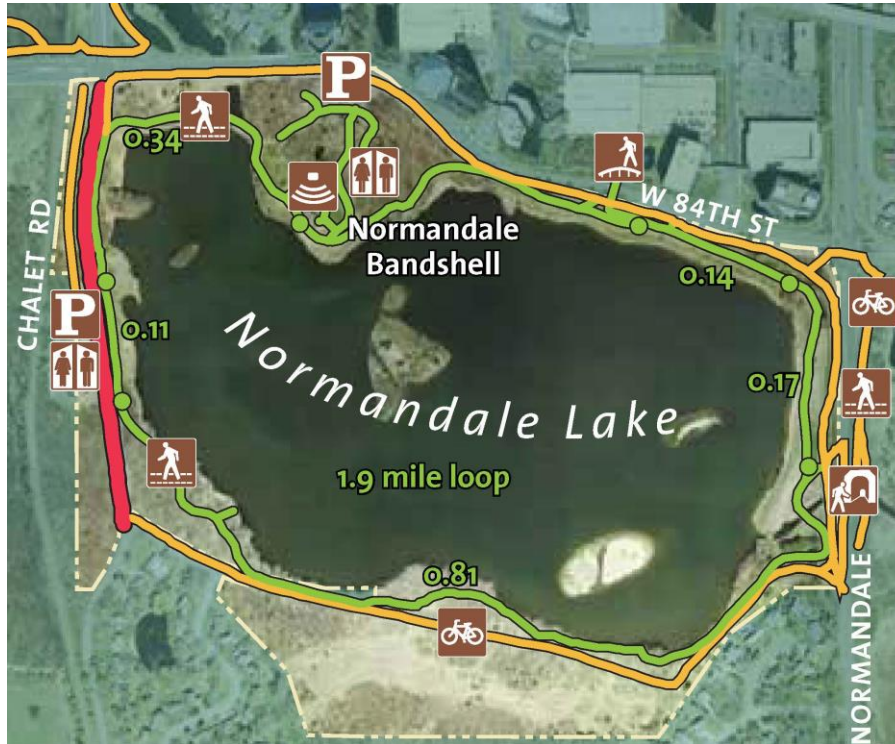
**Reduce algae**

**Increase dissolved oxygen**

**Reduce odors**



# Normandale Lake



Arts in the Park

Summer Fete (July 3<sup>rd</sup>)

Weddings

Fun Runs

~2,000 walkers/day

Large office towers

Nearby residential areas





# We're going to drain a lake



**It's going to be:**

Ugly

Smelly(?)

Have user impacts

People will be concerned about wildlife

**BUT:**

It is going to improve lake health



# Identify Stakeholders



Walkers & park users

Office workers

Nearby residents

City of Bloomington residents

Watershed district residents

City council members, board members, agency staff







# Engagement Planning



District and city partnership

What are the best channels for sharing information & getting feedback?

Involved print, web, video






# Meetings




Pre-Project  
individual  
residential focused  
business focused

## MANAGEMENT PRACTICES: TIMING & COSTS

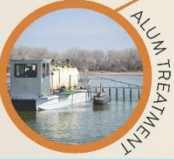
### NORMANDALE LAKE IMPROVEMENT PROJECT



LAKE DRAWDOWN




HERBICIDE TREATMENT



ALUM TREATMENT

Management Practice	Proposed Timing	Estimated Cost
Lake Drawdown	Fall 2018	\$310,000-\$420,000
Herbicide Treatment (2-5 Years)	Spring 2019	\$100,000 per year
Alum Treatment	Spring 2019	\$140,000

**PROJECT FUNDING**  
This project is funded by the Nine Mile Creek Watershed District, in partnership with the City of Bloomington.



Normandale Lake in July

**DID YOU KNOW?**  
Normandale Lake is less than 4 feet deep in most spots. Before the lake was constructed in the mid-1970s for flood control, the area was a wetland and farm field.

**PROJECT INFORMATION**  
Find up to date project details and timelines at: [blm.mn/nlwq](http://blm.mn/nlwq)



# Signs & Brochures





# Adopt a Drain







# Print & Web



Post cards

Articles

Project websites

Social media posts



Enter keywords

[A TO Z INDEX](#) | [ASK THE CITY](#) | [CALENDAR](#)

HOME

RESIDENTS

BUSINESS

GOVERNMENT

ARTS AND RECREATION

ENVIRONMENT

## Normandale Lake Water Quality Improvement Project



### Contact Information

#### Engineering Division

952-563-4870

[engineering@BloomingtonMN.gov](mailto:engineering@BloomingtonMN.gov)

How will the project affect the lake's fish population?

# Videos







# Project camera



<https://normcam.bloomingtonmn.gov>



# Drone footage









# Wildlife Protection



## Turtle Protection Fence

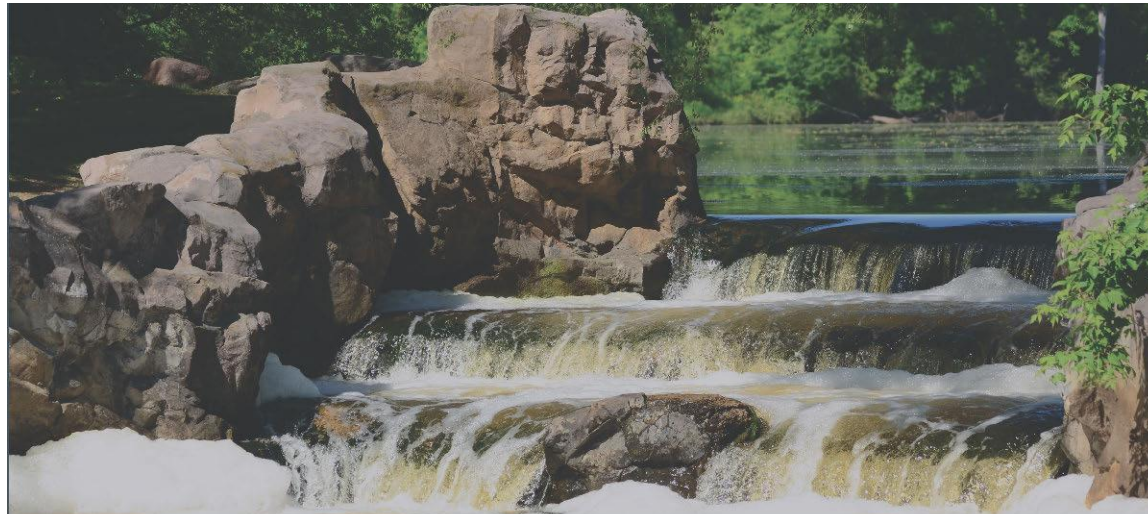
This fencing protects turtles.  
It helps keep them off nearby roads  
during the lake drawdown.

Do not climb over or disturb the fence.





# Why spend the effort on engagement?



## NORMANDALE LAKE PROJECT

COMMUNITY MEETINGS

[NINEMILECREEK.ORG/WHATS-HAPPENING-CURRENT-PROJECTS/NORMANDALE/](http://NINEMILECREEK.ORG/WHATS-HAPPENING-CURRENT-PROJECTS/NORMANDALE/)



September 17, 2018



September 18, 2018





# Next steps

Communicating:  
next project phases  
results from drawdown



## Alum Treatment Demo

Wednesday, May 8, 2019: 12:15-1:15 PM

Normandale Lake Boat Ramp ([Chalet Road](#),  
[Bloomington](#))

Come learn about alum treatments at this project demonstration. HAB Aquatic Solutions will explain what alum is and how it improves water quality; they will also give a demonstration of the barge application process. Staff from the Nine Mile Creek Watershed District and the City of Bloomington will also present an overview of the Normandale Lake Project and its goals.



# Questions?

